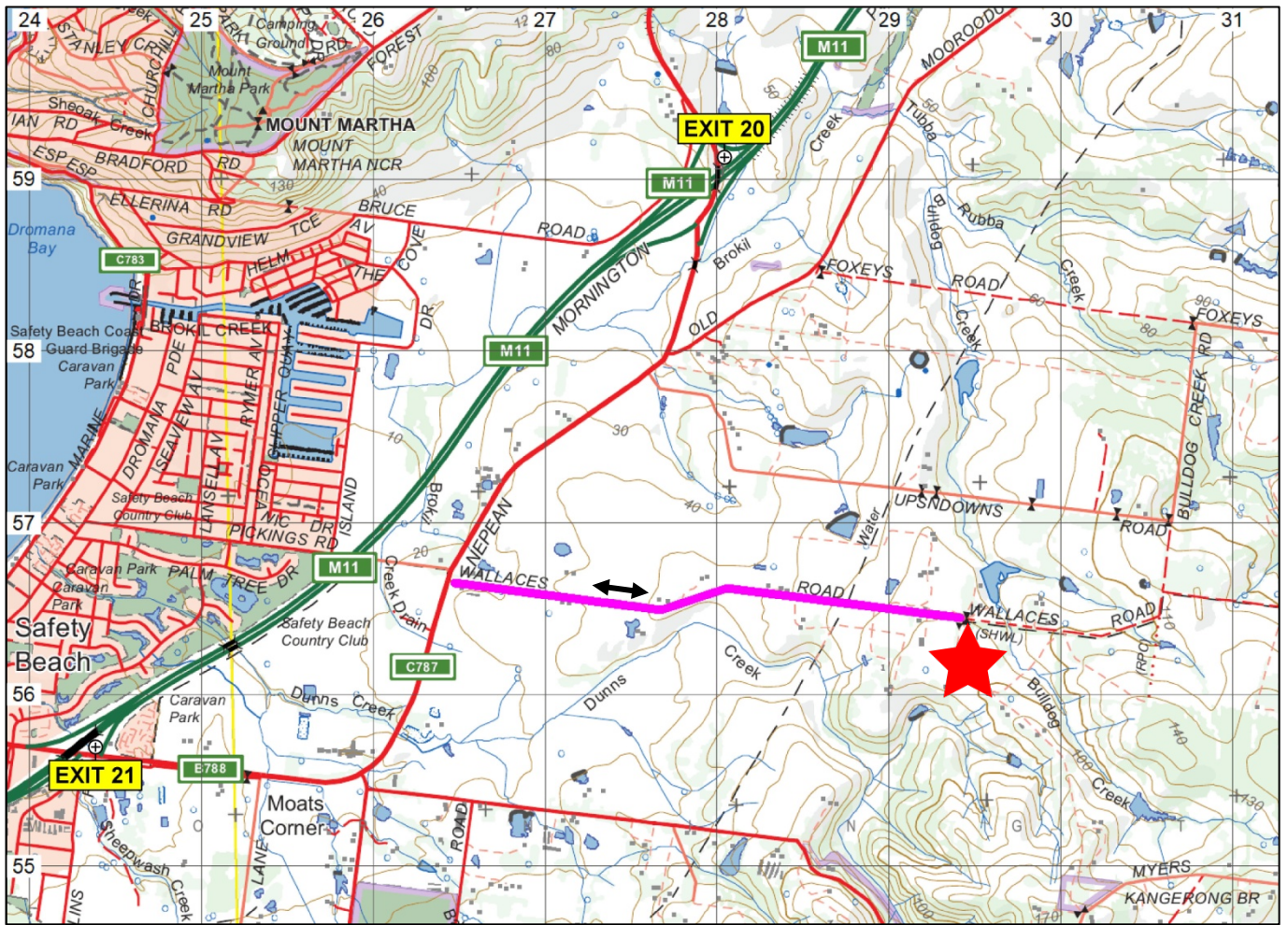


Getting to Elgee Park



Elgee Park, 310 Wallace Road, Dromana (Entry: Melways Map 161 G3)

Access is **ONLY** via the Nepean Highway (B110/C787) as Wallace Rd is closed to through-traffic east of Elgee Park. Parking will be available on site.

Please be considerate of local residents and drive slowly: Wallace Road is narrow and vehicle traffic may cause dust.

The two closest exits from the Mornington Peninsula Freeway (M11) are:

- EXIT 20, signed **B110/C787 Red Hill/Flinders**
- EXIT 21, signed **B110/C788 Dromana**