



# ANNUAL REPORT

## 2010/2011



**Bushwalking: At a natural pace in a natural place**



## **Representing the interests of all bushwalkers and recreational walkers since 1934**

Bushwalking Victoria promotes bushwalking, engages in activities that add value to the community and proactively represents the interests of all recreational bushwalkers.

### **Key performance areas**

- Value to members and community
- Sphere of influence and representation
- Management and governance

### **Benefits to members**

- Access to resources and information via a statewide club network
- Strong voice representing walkers' needs and interests direct to land managers and government regarding outdoor recreation policy, preservation of natural areas, management of and access to public land
- Monitors the operating environment to assess impact of changes; eg legislation and regulations to provide advice/ guidelines to members
- Organises low cost liability and personal injury insurance for members
- Provides all members with a discount card
- Promotes to the community the benefits of joining a club

### **Community contributions**

- Promoting bushwalking/recreational walking as an activity that assists health, wellbeing and social interaction
- Helping to keep walking tracks open for all
- Providing a volunteer specialist search and rescue group to assist Victoria Police
- Providing a referral service for members of the public wishing to join a club or get information about walking
- Facilitating the formation of new clubs
- Publishing free information about safe bushwalking and getting started

Bushwalking Victoria is a signatory to and supports the principles of the Walk 21 International Charter for Walking [www.walk21.com](http://www.walk21.com)

Bushwalking Victoria acknowledges the support of the Victorian Government



Cover photo: Cross Cut Saw, Alpine National Park. Photo by Julie Marshall, Koonung Bushwalking Club.

Bushwalking Victoria Inc A0002548Y ABN 88 344 633 037

PO Box 1007 Templestowe Vic. 3106  
Phone: (03) 8846 4131  
Fax: (03) 9846 7473  
[admin@bushwalkingvictoria.org.au](mailto:admin@bushwalkingvictoria.org.au)  
[www.bushwalkingvictoria.org.au](http://www.bushwalkingvictoria.org.au)

I want to start my first annual report by extending my heartfelt thanks to my predecessor David Reid. David was instrumental in leading and driving the implementation of the major changes that brought about the creation of Bushwalking Victoria from the previous Federation of Victorian Walking Clubs. David's vision, capacity for hard work and ability to recruit a team of people to work together to develop an effective and high performing organisation has been a hard act to follow. I am also indebted to David for the training he provided me prior to taking on the role of president and for his ongoing support and assistance over the past year.



relationship with senior staff in Parks Victoria has suffered somewhat from staff movements. Hopefully the coming year will see an improvement.

### Management and governance

Our need for resources is not just financial and we continue to rely on the generosity of our many volunteers to fill important roles such as conveners/coordinators, honorary consultants, Board members and those who represent BWV on various bodies. The organisation could not function without these dedicated people who are applying their professional skills and passion for

bushwalking for the benefit of the organisation and the wider bushwalking community. On behalf of all members I thank them all for their hard work and dedication.

Some highlights of our achievements in our key performance areas over the 12 months to 31 March 2011 are outlined below:

### Value to members and community

BWV was successful in obtaining a *Future Directions Project* grant from the Department of Planning and Community Development to fund the first stage of our *Future Walker* project. The project will run over the course of 2011 and will obtain professional expertise to work with BWV to develop and make available a package that will provide clubs with: a professionally designed web site; assistance with developing content for the site; access to easy to use software to maintain the site; training and support resources to enable clubs to maintain their sites into the future as new members take on the responsibility for managing the site; a domain name and email addresses to facilitate club administration.

The November meeting of the BWV board was hosted by board member Doug Kneen and his wife Laurice at their Wangaratta home. 25 members from five clubs located in the North-East joined us on a bushwalk in the Warby - Ovens National Park and a BBQ dinner. Both activities provided a great opportunity for board members and club representatives to raise and discuss issues of interest and share ideas. The Board hopes to hold meetings in other regions to provide a similar opportunity for local clubs.

Over the course of the year we have been working closely with the Heart Foundation (Victorian Division) to develop our joint *Green Walks in the Park* project aimed at encouraging people, especially in identified 'at risk' groups, to experience the joy as well as the social interaction, health and wellbeing benefits that walking in parks and other natural settings can provide. Implementation is expected to commence in early June 2011.

### Advocacy and sphere of influence

Advocating for the interests of our members and the bushwalking community generally continues to be one of the more challenging aspects of our work. The past year saw the election of a new government that so far seems to be taking its time in deciding on its priorities, with the notable (for the wrong reasons) exception of the contentious and unnecessary alpine grazing trial. On the positive side, the new government has included increasing participation in active recreation as one of its top priorities for Sport and Recreation. At a Stakeholder Briefing in February the Minister, Hugh Delahunty, specifically mentioned walking and bushwalking as active recreations that the government wanted to see more people participating in and we hope that the actions of the government throughout its term meet their stated intentions.

BWV and some of our Field Officers have developed excellent relationships with a number of Parks Victoria rangers, but our

For 14 years now, Jenny Sykes our Admin officer has capably run our office, liaising with and assisting clubs and providing administrative services to the office bearers, board members and other BWV volunteers and being our contact with members of the public. Jenny has been of great assistance to me and accepts her involvement in my plans and initiatives with equanimity.

Being president isn't a 9-5, Monday to Friday job and it isn't one that I can do without lots of support, encouragement and assistance on the home front. I am extremely thankful to my wife Elaine for all that she does to support me as President, and for the work she has done on behalf of BWV.

We are also grateful for the work of our volunteer Field Research Officers who help to keep the Board and our club network informed about what's happening in our walking areas. Joslin Guest, editor of our newsletter, *Bushwalking News Victoria* (BNV) deserves a special mention for the quality publication she puts together each month. BNV plays a very important role for us in communicating to our member clubs, their members and the wider community the work undertaken by BWV, issues and news of interest and importance to the bushwalking community and publicising the activities of our members.

### Looking forward

This year sees the 'retirement' of the following three board members who have each made significant contributions to the work of BNV during their tenure. Barbara Guerin has been Vice-President for the past year and also in 2008 and 2009, was Assistant Secretary in 2005 and 2006 and a board member in 2010. In each of these roles Barbara has made a significant contribution to the work and development of BWV and provided excellent support to both myself and David Reid. Barbara's contribution of ideas and analysis of issues will be missed.

Carole Petchell was BWV Treasurer for three years from 2006 and continued as a board member for the past two years. Catherine Guli joined the board in 2007 and has been passionate about improving the community contribution of BWV and clubs through involvement in the Walking Communities project and taking a leading role in coordinating our participation in Seniors Week. We will miss Carol and Catherine's energetic contributions to Board discussions and BWV activities.

The year ahead will be full of both new and existing challenges and opportunities, but with new faces with fresh ideas and opinions joining the established members around the Board table I am confident of a successful year.

## SECRETARY'S REPORT

During the past year, Jenny Sykes and I have received queries from clubs on a range of topics from insurance matters to privacy or equal opportunity issues. Often clubs raise the same or similar questions and we are able to draw on information obtained previously. Whilst we cannot give a definitive answer to many queries we are happy to share our sources of information and assist by referring queries to an appropriate person, such as David Gordon for insurance matters. Jenny and I both enjoy this interaction with the committee members of our clubs and see this as an important part of our service to members.

Again, considerable attention has been given to monitoring any legislative changes which may apply to Bushwalking Victoria as an incorporated association and as an employer.

In November 2010, it was Bushwalking Victoria's turn to host the annual face-to-face meeting of Bushwalking Australia. Victoria was responsible for organising the venue and social activities for the

delegates. I was involved in making the arrangements and enjoyed meeting the delegates from all the states and territories.

As expected, an important task was developing a Code of Conduct in conjunction with Sport and Recreation Victoria (SRV). Bushwalking Victoria is required to have a Code of Conduct in place as a condition of receiving funding from 2011 onwards and the final version was distributed to our members in December 2010. Our aim was to keep this Code as simple and straight forward as possible and relevant for bushwalking as a non-competitive activity. Thank you to those clubs who have provided their views on the Code. Originally, Bushwalking Victoria was advised that SRV would require us to report regularly any breaches of the Code by either BWV itself or our member clubs. As yet we have not been advised of any reporting requirements, but this may need to be addressed in the coming year.

**Val Wake**



Board members at the November meeting in the garden of Doug Kneen's home in Wangaratta. From left to right, Barbara Guerin, Doug Kneen, Dave Rimmer, Val Wake, Fred Bover, Chris Towers and David Reid.

## ADMINISTRATION

The day to day running of the office met with a glitch during the later months of 2010 when the ISP we were using via our landlords, the Outdoor Recreation Centre, created some email havoc. This was put to rights, after much angst and extra work, with a change of ISP and I thank members for their patience and understanding during this period.

Faster communication between the organisation, clubs and the public has been encouraged and electronic communication to clubs continues to increase as most clubs are now receiving information by email.

The cheerful volunteers from the Koonung Bushwalking Club, namely Claire Harris and Lynn Lam, continued to contribute their time, ensuring that the monthly Bushwalking News Victoria was posted out on time. My thanks go to them for their friendship and assistance.

Also, I thank all who contribute to the running of the organisation. The Board members have been unstinting in their time and advice to me, especially outgoing secretary, Val Wake and president Chris Towers.

**Jenny Sykes**

# TREASURER'S REPORT

## COMMENTS ON 2010/11 ANNUAL ACCOUNTS

### SPECIFIC POINTS

The financial report has been prepared for use by the members of Bushwalking Victoria and is a special purpose financial report. It has been prepared in order to satisfy the financial reporting requirements of the Associations Incorporation Act 1981. The report is prepared on an accruals basis and is based on historical costs.

For the period reported, Bushwalking Victoria has a net surplus of \$11,924, consisting of an operating surplus of \$14,424 less \$2500 drawn from the Bushfire Recovery Fund. This surplus will be transferred to the equity accounts as indicated in the Income and Expenditure statement.

An Organisation Support Grant of \$15,000 is received annually from the Victorian Department of Planning and Community Development. This grant assists Bushwalking Victoria to operate in an efficient manner and develop effective administration and operational systems. It also helps to meet some of the costs associated with skill development through such things as the first aid qualification subsidy. Unspent grant funds must be returned to the Department unless the Minister specifically authorises otherwise. The current funding agreement is for a single year subject to review following the change of State Government in November 2010.

On 5<sup>th</sup> April 2011 the Board approved an amount of \$33,000 to remain as the contingency reserve to cover such situations as unexpected increase in insurance costs, loss of low cost rental for office premises or loss of government funding.

### NOTES TO THE ACCOUNTS AS AT MARCH 31, 2011

- Interest income of \$6,636 has been apportioned between the General Fund (\$4,446) and the Search and Rescue Fund (\$2,190).
- These funds were received as a donation of \$5000 from the estate of James Stanley Danger and as grants from the Victorian Department of Planning and Community Development.
- Sundry income includes sale of calendars and a share of the profit from the 2010 Federation Event hosted by Waverley Bushwalking Club.
- Includes reimbursements for first aid training.
- The depreciation of equipment has been calculated on a straight line basis/method at rates to match the cost of each item of equipment over its economic life. Only items that had a book value at the start of the year have been included. Adjustments have been made to the relevant equity funds to reflect the changes in residual equipment values. A one-off write down of \$4,809 unexplained residual value of office equipment has been made.
- The Bushwalking Environment Committee expenditure includes an estimated amount of \$2,500 yet to be reimbursed by Parks Victoria.

| Equipment List                     |         |               |
|------------------------------------|---------|---------------|
|                                    | Cost \$ | Book Value \$ |
|                                    |         | 2011          |
| <b>Search and Rescue Equipment</b> |         |               |
| Radios                             | 1,970   | 247           |
| Carry Bags                         | 705     | 88            |
| GPS Units & Mapping                | 4,868   | 1,520         |
| Bothy Shelters                     | 1,353   | 311           |
| Transceivers                       | 4,792   | 838           |
| GPS Units & Mapping                | 3,608   | 433           |
| GPS Units & Mapping                | 4,236   | 393           |
| Emergency Shelters                 | 965     | 37            |
| Radios                             | 5,592   | 3,285         |
| GPS Units & Mapping                | 1,236   | 794           |
| Bothy Shelters                     | 569     | 381           |
| <b>General Fund</b>                |         |               |
| Data Projector                     | 979     | 653           |

### 7. Sundry Creditors

|                                  |         |
|----------------------------------|---------|
| Australian Taxation Office       | (\$439) |
| Health Super                     | \$495   |
| CGU Workers Compensation         | \$97    |
| J Sykes leave loading to be paid | \$20    |

### 8. Other Liabilities

|                     |          |
|---------------------|----------|
| Provision for Leave | \$15,130 |
|---------------------|----------|

### 9. Members Equity

|                                  |           |
|----------------------------------|-----------|
| Members equity at 01 April 2010  | \$175,667 |
| Net Surplus for the current year | \$11,924  |
| Member's equity at 31 March 2011 | \$187,591 |

Current year surplus from the General Fund in the Profit & Loss account has been apportioned to various equity funds to give the net changes shown below:

|                         |          |   |
|-------------------------|----------|---|
| Search & Rescue Fund    | -\$3394  | the operating deficit of \$2514 and equipment depreciation of \$9463 are offset by the value of new equipment of \$569 and \$2514 from the General Fund surplus. A further \$5500 is allocated from the General Fund surplus to cover their budgeted operating expenses for 2011/12 |
| Contingency Fund        | Nil      | the deficit of \$304 from the Insurance Fund is offset by \$304 from the General Fund surplus   |
| General Fund            | Nil      | equipment depreciation of \$5135 is offset by the value of new equipment of \$979 and \$4156 from the General Fund surplus to return the balance to \$15,000 to cover operating expenses prior to the receipt of affiliation fees in June   |
| Future Projects Fund    | \$17,818 | balance of surplus from the General Fund  |
| Bush Fire Recovery Fund | -\$2500  | donation to Marysville & Triangle Development Group   |

### **AUDITOR'S REPORT TO THE MEMBERS OF BUSHWALKING VICTORIA INC**

I have audited the financial report, being a special purpose financial report, of Bushwalking Victoria Inc for the year ended 31 March 2011 as set out in the above pages.

The financial report has been prepared for the purpose of fulfilling the requirements of the Associations Incorporations Act (Victoria).

In my opinion the financial report presents a true and fair view of the financial position of Bushwalking Victoria Inc as at March 31 2011 and the results of its operations and its cash flows for the year ended in accordance with the accounting policies described in the Notes to the financial statements.

Joanna OBrien, BBus (Accounting), TSTC  
April 2011  
Melbourne

### **BUSHWALKING VICTORIA INC A0002548Y**

#### **STATEMENT BY MEMBERS OF THE BOARD OF MANAGEMENT**

The Board has determined by means of the Australian Taxation Office self assessment system that Bushwalking Victoria Inc. is an exempt entity for income tax purposes and that this special purpose financial report should be prepared in accordance with the notes accompanying the financial statements. Bushwalking Victoria Inc does not have any mortgages, charges or securities; and is not a trustee of any trust nor does it have any trusts held on its behalf. In the opinion of the Board the financial report as set out in this document presents a true and fair statement of the financial position of Bushwalking Victoria Inc. as at the 31st of March 2011 and its financial performance for the year ended on that date.

At the date of this statement, there are reasonable grounds to believe that Bushwalking Victoria Inc will be able to pay its debts as and when they fall due during the next twelve months.

6th May 2011      Signed, Chris Towers  
President

Signed, Fred Bover  
Treasurer

## INCOME AND EXPENDITURE STATEMENT FOR THE YEAR ENDED 31 MARCH 2011

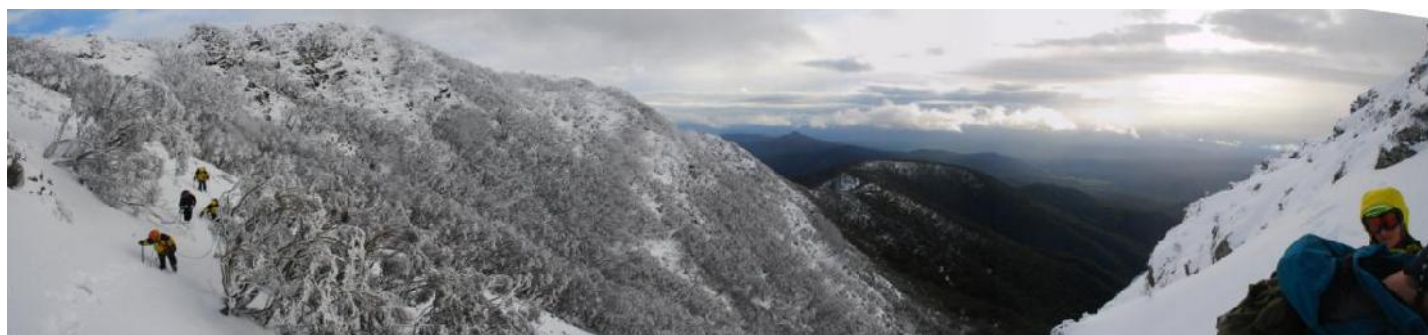
|  | Notes | 2011<br>\$      | 2010<br>\$     |
|--|-------|-----------------|----------------|
| <b>GENERAL FUND</b>                                  |       |                 |                |
| <b>Income</b>  |       |                 |                |
| Membership fees                                      |       | 62,759          | 61,198         |
| Interest   | 1     | 4,446           | 2,885          |
| Donations and grants                                 | 2     | 25,625          | 37,778         |
| Sundry income  | 3     | <u>6,671</u>    | <u>13,196</u>  |
| <b>Expenditure</b>                                   |       |                 |                |
| Communications (includes newsletter)                 |       | 2,721           | 4,491          |
| General administration                               |       | 25,847          | 27,422         |
| Staff costs  |       | 28,542          | 48,328         |
| Training   | 4     | 3,480           | 4,435          |
| Promotions   |       | 167             | 853            |
| Affiliations   |       | 4,198           | 3,797          |
| Bushwalking Environment Group                        | 6     | 2,706           | 2,583          |
| Depreciation   | 5     | 5,135           | 1,429          |
| Surplus/ (deficit) for the year                      |       | <u>26,705</u>   | <u>21,717</u>  |
| [Transferred to equity funds - See note 9]           |       |                 |                |
| <b>SEARCH AND RESCUE FUND</b>                        |       |                 |                |
| <b>Income</b>  |       |                 |                |
| Interest   | 1     | 2,190           | 1,421          |
| Grants (Emergency Management Australia)              |       | <u>0</u>        | <u>25,239</u>  |
| <b>Expenditure</b>                                   |       |                 |                |
| General administration and operations                |       | 4,703           | 4,820          |
| Emergency Management Grant                           |       |                 | 22,568         |
| Depreciation   |       | <u>9,463</u>    | <u>7,712</u>   |
| Surplus/ (deficit) for the year                      |       | <u>(11,977)</u> | <u>(8,441)</u> |
| [Transferred to Search and Rescue Fund - See note 9] |       |                 |                |
| <b>INSURANCE FUND</b>                                |       |                 |                |
| <b>Income</b>  |       |                 |                |
| Insurance contributions by members                   |       | 61,365          | 59,469         |
| Interest   |       | 0               | 0              |
| <b>Expenditure</b>                                   |       |                 |                |
| Insurance payments on behalf of members              |       | <u>61,669</u>   | <u>61,008</u>  |
| Surplus/ (deficit) for the year                      |       | <u>(304)</u>    | <u>(1,539)</u> |
| [Transferred to Contingency fund - See note 9]       |       |                 |                |
| <b>BUSH FIRE RECOVERY FUND</b>                       |       |                 |                |
| <b>Expenditure</b>                                   |       |                 |                |
| Marysville & Triangle Development Group              |       | 2,500           | 0              |
| Surplus/(deficit) for the year                       |       | (2,500)         | 0              |
| [Transferred to Bush Fire Recovery Fund see Note 9]  |       |                 |                |

## BALANCE SHEET AS AT 31 MARCH, 2011

|  | Notes | 2011<br>\$     | 2010<br>\$     |
|--|-------|----------------|----------------|
| <b>CURRENT ASSETS</b>                        |       |                |                |
| Bendigo Bank Cash Management Trading Account |       | 194,921        | 174,792        |
| Federation Event advance                     |       | 1,500          | 2,500          |
| <b>CURRENT LIABILITIES</b>                   |       |                |                |
| Sundry creditors                             | 7     | 173            | 839            |
| Other liabilities                            | 8     | <u>15,130</u>  | <u>20,308</u>  |
| <b>NET CURRENT ASSETS</b>                    |       | <u>181,118</u> | <u>156,145</u> |
| <b>NON CURRENT ASSETS</b>                    |       |                |                |
| Equipment                                    |       | 70,040         | 68,492         |
| Less provision for depreciation              |       | (63,568)       | (48,971)       |
| <b>TOTAL NET ASSETS</b>                      |       | <u>187,590</u> | <u>175,666</u> |
| <b>MEMBERS EQUITY</b>                        |       |                |                |
| General Fund                                 |       | 15,000         | 15,000         |
| Search and Rescue Fund                       |       | 23,017         | 26,411         |
| Contingency Fund                             |       | 33,000         | 33,000         |
| Future Projects Fund                         |       | 108,230        | 90,412         |
| Bushfire Recovery Fund                       |       | 8,343          | 10,843         |
|  |       | <u>187,590</u> | <u>175,666</u> |

*The accompanying notes form an integral part of this report.*

*Fred Bover*  
**Treasurer**



# BUSH SEARCH & RESCUE VICTORIA

Bush Search and Rescue participated in several successful searches over the last year, including:

- A search for a missing woman at Lake Mountain on 12 July 2010, who was located safe and well.
- The rescue and evacuation by Air Ambulance of an injured walker at Eagles Peaks on 4 December 2010.
- The search and rescue of a missing man at Combienbar, East Gippsland from 5 to 8 December 2010 with 29 members participating. A Bush Search and Rescue team found the missing man after he had been lost for three days and assisted on the ground with his evacuation by an Air Ambulance helicopter.
- A search for a missing boy who was found near Buninyong on 19 March 2011 just before Bush Search and Rescue members arrived by bus at the search location.

Articles, photographs and some video footage of recent searches and training activities have been published on our website.

The Bush Search and Rescue Manual is also now available online on our website. We are updating and adding content to this online version to reflect changes and new search processes, techniques and equipment.

A winter skills training weekend was held on 24-25 July 2010 at Mount Hotham. Fifty-one members, including twenty-one new members, participated in activities including navigation, GPS and radio usage, snow skills, steep snow and ice rescue.

Frank Zgoznic stepped down as Bush Search and Rescue Convener in December 2010. Frank presided over a busy period at Bush Search and Rescue which included the high profile search for Minister Tim Holding at Mount Feathertop in August 2009 and commencement of a strategic plan for guiding Bush Search and Rescue's future directions. Peter Campbell was appointed Convener in early 2011.

Bush Search and Rescue formed an Executive in February 2011 to assist with ongoing support, administration and development of the organisation. Duncan Brookes, Monica Chapman, Eric Krista, Rod Costigan and Peter Campbell were appointed to the Executive as inaugural members.

Rod Lawlor is leading the strategic review working group which is progressing with developing our strategic plan. The priority areas identified so far are membership, search effectiveness, budget and finance, the function of the BSAR committee and risk management. The strategic plan will be important for guiding future directions and priorities for Bush Search and Rescue.

Chris Jarvis retired as Equipment Officer early in 2011 after several years in this role. His dedication and attention to detail on all equipment matters has been greatly appreciated. I thank Chris on behalf of Bush Search and Rescue for ensuring that our equipment was well organised, serviced and available for searches. John Baillie and Rod Lawlor have taken over as Equipment Officers.

Rod Costigan has recently implemented improvements to our vitally important call-out systems, including new SMS, email and automated telephony features.

Anne Casey, as Membership Secretary, continues to improve the management of the membership and SMS lists and is preparing a detailed database of training and search activities.

Ren Millsom, as Editor, has again ably produced *Behind the Log* (BTL), our regular newsletter.

Senior Sergeant Barry Gibson, Sergeant Greg Paul and other members of the Police Search and Rescue Squad have provided significant ongoing support for Bush Search and Rescue activities.

On Australia Day, 26 January 2011, Rik Head, a long serving Bush Search and Rescue member and Field Organiser, was awarded the Emergency Service Medal for his lifetime commitment to search, rescue and safety in the bush and mountains. This medal is very significant recognition for Rik's tireless commitment and effort dedicated to providing volunteer search and rescue services for over 4 decades.

There are now 281 dedicated people actively involved with Bush Search and Rescue from over 20 clubs. We are also steadily recruiting individual members - a process now managed by Monica Chapman.

I would like to thank all Bush Search and Rescue members for their contributions and support over the last year that enables Bush Search and Rescue to continue to provide effective and specialised volunteer search and rescue services to the Victorian community.

**Peter Campbell**



## BUSHWALKING ENVIRONMENT COMMITTEE (BEC)

The committee executive consists of a manager, three coordinators, and two specialist consultants. They are supported by 12 Field / Research officers and a number of Club Environment Contacts. Coordinator's reports follow the manager's report.

## BUSHWALKING ENVIRONMENT MANAGER

Below is a summary of my activities as BEC manager and those of the BEC field officers.

My main activities are focussed on supporting group co-ordinators and field officers and various planning and strategic issues including:

- Attending BWV Board meetings, one held in Wangaratta, followed by a day walk with combined clubs
- Organizing BEC co-ordinators meetings
- Attending the Presidents' Meeting
- Liaison with VNPA re return of cattle grazing in the Alpine NP.
- Meetings with Ranger-in-Charge at Wilsons Promontory NP re bushwalking and camping issues.

### Track Development

#### *Grand Strzelecki Track*

- 2 tours of the proposed route & discussions with proponents.
- A meeting with the Grand Strzelecki Track committee.

#### *Freemans Mill Track*

- Post fire assessments
- Organise with Parks Victoria in conjunction with Bushwalking Victoria to clear track.

#### *Dandenong Ranges National Park*

- Met with Parks Vic to discuss options for the 1000 Steps

#### *State Forest Walking Tracks*

- Met with DSE to discuss State forest walking track upgrades

- Attended Central Gippsland Walking track selection meeting
- Attended site visits at Tyers River; Eastern Tyers walking Track and Walk into History Track.
- An exploration with DSE of a proposed new track from Ada Tree-New Ada Mill.

### Hut Maintenance

Huts in the High Country which have undergone a rebuild:

- Alpine - Westons Hut and King River Hut, with Wallaces Hut to be rebuilt during 2011
- Baw Baw National Park—Jans Hut.

### Field/Research officer activities

- Represented BWV on MT Buffalo Advisory Committee (Pauline McLaughlin)
- Monitoring Grampians Long Distance Walking Track proposal (John Petheram)
- Post Flood monitoring in Grampians (Phil Brotchie)
- Represented BWV on Wilsons Prom Advisory Committee, in conjunction with BWV Board met with Parks Victoria to discuss walking & camping issues (Ian McKellar)
- GDT extension to Macedon (Richard Piesse)
- Attended State Forest walking track selection meetings (Neil McCracken, Bill Casey, Richard Piesse & Trevor Smith.
- Represented BWV on Old Beechy Rail Trail Committee (Bernard Jordan)

**Dave Rimmer**



Work at Buckwong Creek—AAWT



Volunteers at Freemans Mill Track

## TRACK MAINTENANCE

The year was a bad one with unprecedented summer rain damaging many tracks. At the time of writing, most of the walking tracks in Wilsons Promontory and the Grampians are still closed and many other areas are affected to some degree.

Nine events were scheduled for the year . One was cancelled but those events that went ahead were well attended . Thanks to all who participated.

**Jim Harker**

## LAND MANAGEMENT & ENVIRONMENT CONSULTANT

### VEAC Investigations

*Victorian Environmental Assessment Council (VEAC) River Red Gum Forests Investigation Community Reference Group (CRG).*

Following input by the CRG (of which the LM&E Consultant was a member) and many other relevant bodies, and the subsequent governmental declaration of various Parks in Victoria to protect River Red Gum forests, the fight to protect River Red Gums moved to the NSW side of the border. Conducted by a number of environmentally-active interest groups (with input from BWV through the LM&E Consultant) this action eventually bore fruit in the similar protection of large tracts of River Red Gum forest by the NSW Government, this development being officially announced on 18 May 2010. Thus, large contiguous areas of both Victoria and NSW (about 200,000 hectares in total) now have their River Red Gum forests protected by appropriate legislative determinations. BWV maintains a watching brief on this matter, but no further reports will issue on this subject unless a major development occurs.

*VEAC Metropolitan Melbourne Investigation (MMI) CRG*

The LM&E Consultant attended and provided input to the fourth official meeting of the CRG on 15 November 2010, during which the Group was briefed on and subsequently talked about the MMI Discussion Paper. The Consultant subsequently drafted BWV's submission on the Discussion Paper.

*VEAC Remnant Native Vegetation Investigation*

On 22 July 2010 the LM&E Consultant drafted BWV's submission in response to VEAC's Discussion Paper of 28 June 2010 on this topic.

### Submissions

During the reporting year, in addition to those to VEAC mentioned above, BWV submitted substantial representations, drafted by the LM&E Consultant, which commented on the following government environmental papers:

- Point Nepean Draft Master Plan
- Draft Whittlesea Green Wedge Management Plan

### Input

On 24 June 2010 the LM&E Consultant provided comments to the BEC Co-ordinator on the Loddon Mallee Regionally Significant Trails Project.

On 25 January 2011 the LM&E Consultant wrote to the Victorian Premier, the Victorian Minister for Environment & Climate Change and the federal Environment Minister decrying the reintroduction of cattle into the Alpine National Park by the Victorian Government.

### In-house Meetings

Attendance at BEC Coordinator meetings (including discussion of BEC and TMG issues) periodically throughout the reporting year.

Attended the afternoon sessions of the Conference of Field and Club Bushwalking Environment Officers at Westerfolds Park on 8 May 2010.

### Projects

Participated in Snake Island reforestation and alpine restoration projects.

### Grampians Involvement

Since February 2011 the LM&E Consultant, now based near Ararat, has been walking in the Grampians and Mt Cole areas privately or with bushwalking clubs based in Ballarat, Stawell and Horsham, and has participated in track-clearing work with Ballarat Bushwalking and Outdoor Club at Mt Langi Ghiran and in the Grampians. He attended a Parks Victoria meeting in Halls Gap on 22 February 2011 regarding progress with recovery after the devastating floods, and inspected, in their company, flood damage in the Silverband Falls area. He was appointed Grampians Field Officer on 15 March 2011, and has since provided monthly reports and ad hoc updates to the BEC Co-ordinator on the Grampians area.

**Dr Phil Brotchie**

## CONSERVATION PROJECTS

Three conservation project activities were held during the year, all very successful. They were:

### Snake Island

Manna Gum restoration courtesy of a Parks Victoria community grant.

### Alpine Restoration at Falls Creek

This is an annual event on the Bogong High Plains and continues to

be very popular and is also made possible by a community grant from Parks Victoria.

### Regent Honey eater Project

This is also a very popular event organised by Ray Thomas in the Lurg Hills near Benalla.

**Steve Robertson**

## COMMUNITY ENGAGEMENT

**Walking Communities:** the major goal of this project, funded by a grant from the Department of Planning and Community Development, was the publication and distribution of two guides: one to encourage community walking groups to walk in green, natural areas, and the other for bushwalking clubs to mentor these groups. Both guides were launched by David Strickland (Department of Planning and Community Development-Sport and Recreation Victoria) at a large gathering that included representatives from local councils, community support agencies, many walking groups and culturally and linguistically diverse (CALD) communities. Following the launch the 'How to Green Walk' guides were distributed to targeted individuals within the organisations mentioned above while all bushwalking clubs were sent a copy of the 'Engaging Local Walking Groups' guide. The ten 'green walks' described in the guides have proved so popular that they have now been reprinted as individual sheets, are packaged within a simple folder and will be distributed free to as many groups as possible. The folders are available, free of charge, from the Bushwalking Victoria office. This highly successful project is now complete.

**Green Walks in the Park:** encouraging more people to walk more often in more places is a goal that Bushwalking Victoria shares with the Heart Foundation and is a logical progression of the 'green walks' concept. These common interests are also shared by Parks Victoria which has awarded a grant to Bushwalking Victoria and the Heart Foundation to develop a programme of Green Walks in the Park. These walks will be held across regional as well as metropolitan Victoria and will be designed to increase the numbers of people walking in natural, green, spaces. In time it is hoped that some of these new walkers will progress to more challenging walks. A part-time Project Officer will be appointed to coordinate the Bushwalking Victoria aspects of the project.

**Melwalk:** this project now has an enthusiastic pair of voluntary Project Managers who have developed great protocols for the collection and storage of the comprehensive information necessary for accurate, consistent walk notes and maps. Together with a number of excellent working groups they have researched and mapped walks in several 'hubs' across Melbourne. Unfortunately, with the rapid and unexpected growth of the Green Walks programme absorbing time and energy of various Board members, Melwalk has paused, but its relevance and the community's need for it remain unchanged.

**Seniors:** fifteen bushwalking clubs participated in the Seniors' Festival Walks organised in association with the Office of Seniors and the local councils. As in previous years the involved clubs put in a lot of effort as did some councils but while some walks were hugely successful others were considerably less so. For the effort involved this was deemed to be a disappointing outcome. The concept of encouraging older (and other) members of our community to walk in natural areas is excellent and in future will be incorporated into the Green Walks in the Park programme (note that any club wishing to organise a Seniors' Walk is welcome to do so). This programme will have the additional benefit that it is ongoing instead of a 'one-off' and therefore will provide opportunities for any initial enthusiasm to lead on to further walks with a gradual progression to more challenging walks.

**Member clubs:** lots of clubs engage in community events and the 'Community' tab in the Members News section of our webpage is designed to celebrate these activities. Please keep BWV informed about what your club is doing so that others can be inspired to initiate events and/or to participate in community activities.

**Catherine Guli**

## COMMUNICATION AND MARKETING

### Web site

The BWV web site continues to be our most important communication and marketing tool, with an average of 1,460 unique visitors per month. As yet BWV has not embraced the newer web technologies such as Facebook, Twitter or LinkedIn a challenge which we need to address in the near future. The Board has also recognised that the BWV web site, which is now almost 5 years old, needs a comprehensive review and update and also that the site has a significant content gap in that there is no information provided on walking opportunities. Actions to address both of these shortcomings will be undertaken throughout 2011 and into 2012.

### Survey

While the web site and Bushwalking News Victoria both facilitate communication from BWV to its members and the wider community, we lack a facility for communication back the other way. In 2010 we trialled the use of the Survey Monkey online survey tool as a means of addressing this by successfully conducting a member survey on Wilsons Prom. We plan to make wider use of Survey Monkey to seek the input of members and the public into the work that we do.

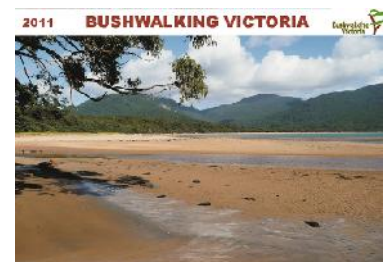
### Calendar

Support for the 2011 calendar was a little disappointing, with both the number of images submitted and sales being down on previous years. However, the entire print run of 750 sold out, generating a profit of \$1,370 for the Future Projects Fund.

Well known bushwalkers John and Monica Chapman once again generously devoted their time and expertise to select the images required for the calendar and without their contribution it would not have been possible to produce such a quality product.

Given the declining interest in the calendar and the substantial workload involved in producing it, the Board has decided to discontinue publishing a calendar.

**Chris Towers**



# STRATEGY CONSULTANT

## Overview

During 2010 -11, as in previous years, the role of the Strategy Consultant has focussed on assisting the BWV Executive in three key areas:

- Increasing BWV's visibility and influence in government – state and local, and with organisations concerned with community health and wellbeing
- Working with the BWV executive to develop position papers and other material designed to position BWV as a 'thought leader' in areas of key interest to the organisation, such as the role and value of recreational walking, the conception and design of walking facilities and the value of recreational walking to the community
- Assisting BWV in the formulation of long term objectives and the strategies needed to attain them, consistent with the overall objectives of BWV.

## Increasing Visibility and Influence in Government

During the course of 2010, the Victorian state election resulted in a new government taking office. This has set up the challenge of forming new relationships, and reacting and ultimately seeking to lead, government policy in matters related to walking. In particular, the new government's actions in releasing cattle back into certain Alpine areas has raised controversy and has pointed up the need for a fully thought through policy relating to commercial activities in parks and reserves. The Strategic Consultant has therefore produced a discussion paper addressing the issues and factors relating to this contentious area. This will form part of the process of policy formation for BWV and Bushwalking Australia (BAI).

The new Victorian government has stated an interest in fostering walking as an aid to community health and wellbeing, but it is not yet clear how this will translate into practical effect. BWV needs to be ready to influence decision making, and to react to decisions made.

Partly as a result of the 'Healthy Parks Healthy People' Congress (April 2010), there has been a rapid increase in the public recognition of recreational walking as an adjunct to good health and wellbeing. As a result, BWV is developing relationships with the Heart Foundation and Beyond Blue (among others), aimed at using our expertise to bring walking to a wider community. The Strategic Consultant has been a part of the group that has developed strategies to place BWV more centrally in the debate.

## Thought Leadership

As noted, it has become ever more imperative that BWV has a well thought out and consistent policy towards commercial activities in Parks and Reserves. This is a topic which carries much importance (and emotion) in the bushwalking world. We need to be able to articulate a policy which relates community access, preservation of the environment and amenity, and reasonable local interests and needs in a way that recognises the distinction between different types of Parks and Reserves. The Strategy Consultant has been working to assist this process, which is ongoing.

It should be noted that thought leadership involves anticipating issues before they arise, and BWV has been giving thought (along with BAI) to how bushwalking organisations can become more proactive in influencing policy formulation in governments. This takes time to achieve, but there is evidence that key Victorian Government agencies are increasingly willing to discuss issues related to walking with us, before decisions are finalised.

The Strategic Consultant prepared two related papers on influencing politicians and the media, aimed at bushwalking clubs and state bushwalking federations. At the request of BAI, these have been made available to all of the State Federations in Australia for distribution to their clubs.

## Long Term Objectives and Strategies

The Strategy Consultant has focussed on two key areas during 2010-11:

Assisting in the definition of the role BWV can/should play as a recreational walking advocacy group. This is an ongoing activity, which has seen rapid community attitude changes over the last few years. As noted above, the challenge during 2011 will be to engage with the new Victorian government and to understand their existing and emerging policies as they relate to recreational walking.

Defining the role BWV can play in fostering the concept of 'walkability' in our cities. This activity was described in the 2010 report, but due to the change in government, and also a management discontinuity in the 'Kinect' organisation, progress has been slow. It is however, an extremely important long term subject. In support of this definition, a 'Walking Context Diagram' has been created which relates recreational walking to the range of walking related activities in the community.

**Tony Walker**



Members of several north-eastern clubs joined Board members for a walk in the Warby—Ovens National Park in November.

## FEDERATION EVENTS

### General

Once again Clubs have responded positively to hosting Federation events by offering to run events prior to any need to advertise for host clubs. Currently the Catholic Walking Club in association with the Peninsula Bushwalking Club are enthusiastically planning an exciting program with 21 day walks to be held on the Southern Mornington Peninsula later in October this year.

Meanwhile, Maroondah Bushwalking Club are eagerly bracing to run the 2012 weekend event, giving the fire-ravaged community of Marysville a boost, as a likely venue.

Offers are still open to clubs to host the 2013 Federation Day event. These events are excellent opportunities for clubs to enjoy. They are satisfying to run, unify and showcase wonderful clubs and can even help to celebrate a special club milestone.

### 2010 Federation Weekend

Waverley Bushwalking Club hosted this event at Anglesea, on October 8-10. The fantastic success of this weekend reflected the amount of hard work attended over 2 years, particularly by the Federation Organising Committee.

A number of emails and letters of congratulations commented favourably on the YMCA base facilities (including the food, its service and on site accommodation), the walks booklet, selection of

walks and organisation of the weekend. Even the weather was outstanding for the entire weekend.

The colourful souvenir walks booklet, a lasting legacy of this event, has provided the avenue to return to this area and re-experience the variety of beach, bush, waterfalls and stunning wildflowers again.

The event location was appreciated and well supported by the other BWV clubs and individual members. 240 participants from 27 clubs enjoyed 21 different walks. Except for the most difficult walks, most were rerun on the second day.

Technology continues to aid and improve the efficiency of the event. Pre-registration and pre-selection of walks with provision of information on the website and BNV continue to increase efficiency and reduce congestion at the event. The excellent first time use of name badges with member club name was a great incentive to initiate cohesion right from arrival at Anglesea and especially on the walks and at meal gatherings.

Despite the low costs incurred by participants for registration, accommodation and excellent meals and afternoon teas, the outstanding planning and organisation of the event managed this event to be self sustaining and a healthy financial outcome resulted.

**Sylvia McLean**



Scenes from the Federation Walks based in Anglesea, October 2010

## BUSHWALKING AUSTRALIA INC (BAI)

The highlight for BAI in the past year was the annual face to face conference and AGM that was hosted by Victoria and held at the Eltham Motor Inn. Representatives from each state attended for a weekend of presentation and workshop sessions covering a range of topics including: developing strategic relationships, development of commercial activities, tourism and infrastructure in national parks, engaging with politicians and the media and bushwalking skills and leader training.

A highlight of the conference was the attendance of Dennis Page, an Executive Member of the Federated Mountain Clubs of NZ, the BAI counterpart in that country. Dennis gave an insight in to the role and operations of his organisation and some of the issues faced by

the NZ walking community. David Reid has accepted an invitation from the FMC to attend their 2011 conference in June. The 2011 BAI conference will be hosted by Bushwalking Tasmania and will be held near Port Arthur in late November.

Arranging value for money insurance cover for clubs across Australia continues to be a most important role for BAI. At my suggestion the insurance renewal process this year has trialled an online option for clubs to answer the insurance questionnaire.

At the AGM David Reid was re-elected President and I was re-elected Treasurer.

**Chris Towers**

## GOVERNANCE & MANAGEMENT

Bushwalking Victoria is an Incorporated Association and the peak body representing bushwalkers and other recreational walkers in Victoria.

There are 3 categories of membership.

- **Affiliated members** - 64 clubs, where the main activity is bushwalking. These clubs have full voting rights and their members are eligible to hold office.
- **Associate members** - 9 organisations or clubs whose activities include bushwalking but they are constituted primarily for other purposes. Associate members do not have voting

rights but their members are able to participate in many Bushwalking Victoria committees and activities.

- **Individual supporter members** - 41 individuals who don't have voting rights but may participate in committees and activities.

The organisation is governed by a Board of Management comprising five elected officers and five general Board members.

The Board currently meets up to 11 times each year to review performance, make policy decisions and develop strategic direction.

The day to day management of the organisation is carried out by the office bearers, conveners of standing committees and other specialist officers.

### Board of Management - Office Bearers

|                |                |                                    |
|----------------|----------------|------------------------------------|
| President      | Chris Towers   | CAEX Bushwalking Club              |
| Vice President | Barbara Guerin | Bendigo Bushwalking & Outdoor Club |
| Secretary      | Val Wake       | CAEX Bushwalking Club              |
| Treasurer      | Fred Bover     | Diamond Valley Bushwalking Club    |

### Board of Management - General Board Members

|                 |                                  |
|-----------------|----------------------------------|
| David Reid      | Waverley Bushwalking Club        |
| Catherine Guli  | Waverley Bushwalking Club        |
| Carole Petchell | Bushrangers Women's Walking Club |
| Dave Rimmer     | Victorian Mountain Tramping Club |
| Doug Kneen      | Benalla Bushwalking Club         |
| John Creaser    | Bayside Bushwalking Club         |

### Staff

|                        |             |
|------------------------|-------------|
| Administration Officer | Jenny Sykes |
|------------------------|-------------|

### Other

|                  |           |                                   |
|------------------|-----------|-----------------------------------|
| Honorary Auditor | Jo OBrien | VNPA Bushwalking Activities Group |
| Public Officer   | Val Wake  | CAEX Bushwalking Club             |

### Standing Committee Chairpersons and Working Group Coordinators

|                                   |                 |                                  |
|-----------------------------------|-----------------|----------------------------------|
| Bush Search & Rescue Victoria     | Peter Campbell  | Individual supporter/member      |
| Bushwalking Environment Committee | Dave Rimmer     | Victorian Mountain Tramping Club |
| Track Development                 | Dave Rimmer     | Victorian Mountain Tramping Club |
| Track Maintenance                 | Jim Harker      | Victorian Mountain Tramping Club |
| Conservation Projects             | Steve Robertson | Maroondah Bushwalking Club       |
| Publications/Editor               | Joslin Guest    | Boroondara Bushwalking Club      |

### Consultants

|   |               |                                   |
|---|---------------|-----------------------------------|
| Strategy                                  | Tony Walker   | Waverley Bushwalking Club         |
| Land Management & Environment Submissions | Phil Brotchie | Walking Club of Victoria          |
| Federation Walks                          | Sylvia McLean | Essendon Bushwalking Club         |
| Accounting                                | Jo OBrien     | VNPA Bushwalking Activities Group |
| Communications                            | Chris Towers  | CAEX Bushwalking Club             |

### Representatives on Other Bodies

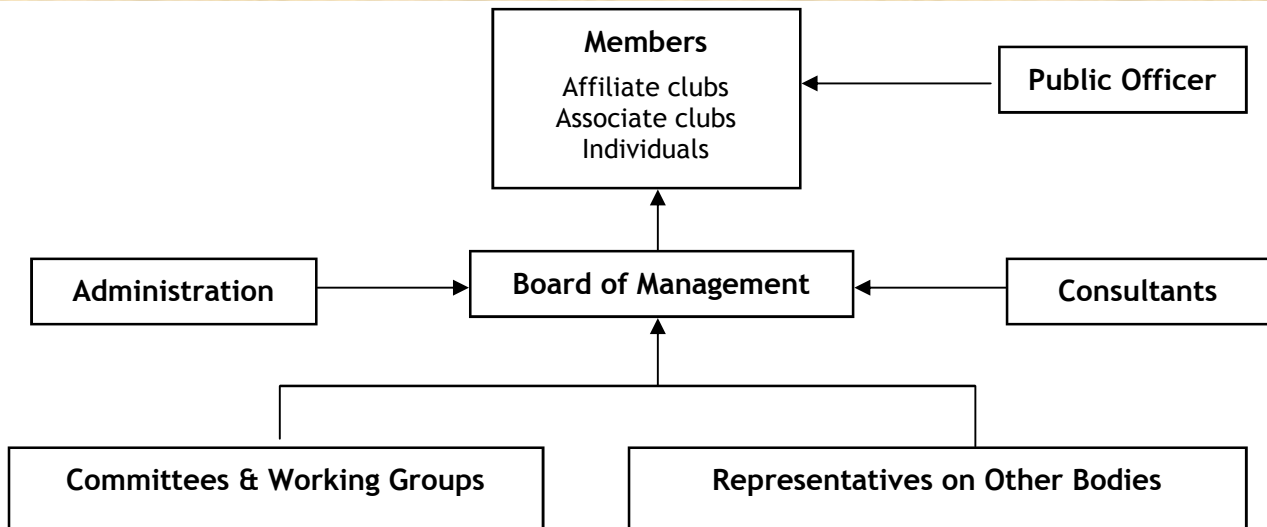
|                       |              |                           |
|-----------------------|--------------|---------------------------|
| Bushwalking Australia | David Reid   | Waverley Bushwalking Club |
|                       | Chris Towers | CAEX Bushwalking Club     |

### Organisations where BWV Members Provide a Bushwalking Perspective

|  |                    |                            |
|--|--------------------|----------------------------|
| Walking Trails Grading Project Control Board | David Reid         | Waverley Bushwalking Club  |
| River Red Gum Reference Group                | Phil Brotchie      | Walking Club of Victoria   |
| Mt Buffalo Reference Group                   | Pauline McLaughlin | Border Bushwalking Club    |
| AAS Technical committee                      | Paul Chamings      | Maroondah Bushwalking Club |
| Living Links Steering committee              | Tony Walker        | Waverley Bushwalking Club  |

## BUSHWALKING VICTORIA INC

# ORGANISATION STRUCTURE



## MEMBERSHIP

### Affiliate Members

Ballarat Bushwalking & Outdoor Club  
 Basically Bushwalking Inc.  
 Bass Coast Strollers Inc.  
 Bayside Bushwalking Club Inc.  
 Ben Cruachan Walking Club Inc.  
 Benalla Bushwalking Club Inc.  
 Bendigo Bushwalking & Outdoor Club Inc.  
 Berwick & District Bushwalking Club Inc.  
 B'nai B'rith Ramblers  
 Border Bushwalking Club Inc.  
 Boroondara Bushwalkers Inc.  
 Bunarong Bushwalking Club Inc.  
 Bushrangers Womens Walking Club  
 CAEX Bushwalking Club Inc.  
 Camperdown Bushwalking Club  
 Catholic Walking Club of Victoria Inc.  
 Cobram Bushwalking Club Inc.  
 Dandenong Valley Bushwalking Club Inc.  
 Diamond Valley Bushwalking Club Inc.  
 Echuca Moama Bushwalking Club  
 Eltham and Environs Walking Group  
 Essendon Bushwalking Club Inc.

Friends of the Great South West Walk Inc.  
 Geelong Bushwalking Club Inc.  
 Gisborne Bushwalking Club Inc.  
 Good Companions Walking Club  
 Grampians Bushwalking Club Inc.  
 Great Dividing Trail Association Inc.  
 Heathcote Walkers  
 Hiking!  
 Keilor Bushwalking Club Inc.  
 Koonung Bushwalking Club Inc.  
 Maroondah Bushwalking Club Inc.  
 Melbourne Bushwalkers Inc.  
 Melbourne University Alumni Bushwalking Group  
 Melbourne Walking Club Inc.  
 Melbourne Womens Walking Club Inc.  
 Melton Bushwalkers Inc.  
 Otway Ranges Walking Track Assoc. Inc.  
 Pakenham Bushwalking Club Inc.  
 Peninsula Bushwalking Club Inc.  
 Peregrine Club Inc.  
 Ramblers Walking Club Inc.

Rosebud Ramblers  
 Shepparton Adventure Club Inc.  
 South Gippsland Walking & Adventure Club  
 Stonnington Walking Club  
 Strzelecki Bushwalking Club Inc.  
 Sunraysia Bushwalkers Inc.  
 Taradale and District Walking Club  
 The Nomads Outdoors Group Inc.  
 The Wednesday Walkers  
 Tocumwal Bushwalking & Adventure Club  
 Victorian Mountain Tramping Club Inc.  
 Walking Club of Victoria Inc.  
 Wangaratta Out & About Inc.  
 Warby Range Bushwalkers Inc.  
 Warrnambool Walkers Inc.  
 Waverley Bushwalking Club Inc.  
 Wayward Women Walkers  
 Werribee Bushwalking & Outdoor Club Inc.  
 West Gippsland Bush Walkers Inc.  
 Wimmera Bushwalking Club Inc.  
 Wonthaggi Bush & Beach Walking Club

### Associate Members

Alpine Search & Rescue Victoria Inc.  
 Birkebeiner Nordic Ski Club Inc.  
 Cowombat Walking Club  
 Melbourne University Mountaineering Club

Monash Bushwalking & Outdoors Club  
 Scout Bushwalkers  
 VNPA Bushwalking Group  
 Victorian Rogaining Association

YHA Bushwalking Club

### Bushwalking Victoria is a member of:

Bushwalking Australia, Australian Conservation Foundation, Australian Ski Patrol Association, Environment Victoria, High Country Huts Association, Outdoor Recreation Centre, VicSport and Victorian National Parks Association.