



*At a natural pace      In a natural place*

# **ANNUAL REPORT**

## **2007/2008**



PO Box 1007 Templestowe Vic. 3106  
Phone: (03) 8846 4131  
Fax: (03) 9846 7473  
[admin@bushwalkingvictoria.org.au](mailto:admin@bushwalkingvictoria.org.au)  
[www.bushwalkingvictoria.org.au](http://www.bushwalkingvictoria.org.au)

## Representing the interests of all bushwalkers and recreational walkers since 1934 and still meeting the challenge.

Bushwalking Victoria promotes bushwalking, engages in activities that add value to the community and proactively represents the interests of all recreational bushwalkers.

### Key performance areas

- Value to members and community
- Sphere of influence and representation
- Management and governance.

### Benefits to members

- Access to resources and information via a statewide club network
- Strong voice representing walkers' needs and interests direct to land managers and government regarding outdoor recreation policy, preservation of natural areas, management of and access to public land
- Monitors the operating environment to assess impact of changes; eg legislation and regulations to provide advice/guidelines to members
- Organises low cost liability and personal injury insurance for members
- Provides all members with a discount card
- Promotes to the community the benefits of joining a club.

### Community contributions

- Promoting bushwalking/recreational walking as an activity that assists health, wellbeing and social interaction
- Helping to keep walking tracks open for all
- Providing a volunteer specialist search and rescue group to assist Victoria Police
- Providing a referral service for members of the public wishing to join a club or get information about walking
- Facilitating the formation of new clubs
- Publishing free information about safe bushwalking and getting started.

Bushwalking Victoria acknowledges the support of the Victorian Government



*Department for  
Victorian Communities*

---

## PRESIDENT'S REPORT

---

This report summarises our activities during the past year in the context of the three key areas that comprise the main focus of our strategic plan. It also identifies some important matters affecting our future.

### Value to members and community

Through the work of our salaried admin officer we have been able to provide support services to our members and maintain a public contact and membership inquiry referral to our clubs. The value for money of our insurance scheme continues to improve and we have progressively moved to more electronic communication to ensure clubs and members are informed quickly about those matters that may affect their activities. The discount scheme we have with various suppliers has been maintained but needs to be expanded.

Much of the value to our members is in the work going on in the background that ensures we have good bushwalking amenity for the future. Some of the activities that support this are noted below.

Our club network continues to be an important strength of the bushwalking community. The local contribution by our clubs adds great value to the community. During this last year a number of clubs continued to contribute to their local communities and some undertook new initiatives. Such things as relay for life, local conservation projects and introducing refugees to our wonderful natural areas are but a few of the activities in which our clubs have engaged. It is also pleasing to see increasing interaction between clubs at such events as the Federation Walk and the conference of Club Presidents.

Bushwalking Victoria activities such as Search and Rescue, Track Maintenance, Track Development and Conservation Projects are other important ways that we in the bushwalking community have continued to use our skills for the benefit of the community as a whole.



### Influence and Representation

We have continued to build influential relationships which have resulted in the signing of a Memorandum of Cooperation with Parks Victoria and we have been invited to join various consultative groups where decisions affecting active recreation are made. These include the Trails Classification Project Control Board; the Living links Steering Committee, various community reference groups and a number of others that are detailed in the body of the report. This year for the first time we took an active role in the Tracks and Trails Conference. We presented a paper "CREATING TRAILS THAT WALKERS WILL WANT TO WALK" which outlined the special needs of walkers as distinct from other public land users.

These activities enable us to present the needs of our constituency and also to recognise the legitimate needs of others. We will continue to build our reputation as an organisation that whilst pressing for the needs of our members is not narrow in its view but is one that is mindful of the overall public good.

During the last year we have continued to work with Sport and Recreation Victoria to ensure that the important role of active recreation is properly understood by the agency and by the Minister's office.

### Management and Governance

The change to our present governing structure is bedding down well with the Board mainly concentrating on issues and decisions that affect the future direction of recreational walking. This has been facilitated by the work of our standing committees and working groups. They have investigated and discussed the details of issues and formulated recommendations for Board consideration and decision. These committees/groups (that include Board members) along with staff are the executive arm of the organisation and they ensure that day to day operational activities occur.

The financial viability of the organisation has been maintained but for BWV to exert proper influence on behalf of our members we need to strengthen our financial resources. Some of this will continue to come from grants and in the past year we have actively pursued a number of grants with some success. However we need to increase our activity in this area.

The Board has established a finance committee to monitor financial performance, to look at ways to lift our income and build a stronger capital base to generate increased investment income. Costs will inevitably increase over time and we need to plan for these.

Our need for resources is not just financial and we continue to rely on the generosity of our many volunteers. The dollar value of our volunteers over the last year was in the order of \$200,000.

### Vale



It is with great sadness that I report the passing of two of our key members during the year.

Don Hutton was our Project officer for the Otways area. Don spent many hours exploring the Otways and keeping us informed about the important matters affecting the development of walking tracks and the environmental integrity of this beautiful area. He was actively involved with Geelong Bushwalking Club, Otway Ranges Walking Track Association, Anglesea Aireys Inlet Environment Group (ANGAIR) and the Waverley Bushwalking Club. Don will also be missed by the academic community at Monash University where he pioneered physics and environmental science courses.

Eileen Kerlin was the Editor of our newsletter and a member of our interim Board of Management. Eileen started bushwalking in 1995 and immediately threw herself in the "deep end". She contributed to her own club, Waverley, in many different roles including President and her no nonsense approach, energy and infectious enthusiasm will be greatly missed.

### **Volunteers and Thank you**

The contribution of volunteers was in the order of 17,000 hours [an 8.6 full time staff equivalent]. The organisation could not function without these dedicated people and I thank you all for your contribution.

I thank our Conveners/coordinators, honorary consultants, my fellow Board members and those that represented us on various bodies.

Again a special thanks to my partner Val Ford for her extensive voluntary personal assistant services to Board members. Thank you to our staff Jenny Sykes our Admin officer for maintaining our public contact service liaising with and assisting clubs and providing other administrative services and to Gina Mancuso who joined us during the year as Project Officer for the "Go Further" program. We are also grateful for the work of our 16 volunteer Field Research Officers (formerly project officers) who help to keep us informed about what's happening in our walking areas. It is pleasing to note

a number of these Officers are now from regional clubs; something that we wish to encourage

This year our Secretary Jan Clark is standing down and I thank Jan for her contribution both as a Board member and as Secretary.

### **Looking forward**

Our current strategic plan runs out of life this year and we will be preparing a new plan towards the end of the year. To that end Board members and conveners met in December to look at where we want to head and then in March we met with Club Presidents to share some ideas about our future direction.

The key performance areas already identified remain valid but there are activities we need to strengthen. In particular how we communicate with members and with the outside world. We need to keep lifting the profile of the bushwalking community and demonstrate the value we are contributing to the public good. There will be many challenges during this process and BWV needs your support in helping us with the task.

The following pages of the Annual Report set out details about our achievements during the last twelve months. Please spend some time reading about them. I think you will feel proud of our organisation

David Reid  
President

---

## **ADMINISTRATION**

The big office news for this year was the move to the new premises. It certainly provides a more pleasant working environment and as a side issue gives the opportunity for helpful interaction with Parks Victoria staff as well as the personnel from the other recreational groups housed there. This year Gina Mancuso joined us as *GO Further* project officer and it has been enjoyable to have her company in the office as well as her sound advice at times when needed.

With the move, the nearby based Koonung BWC, were approached to ask for volunteers to assist in the office if required, and we now

have a list of people to call on.

The day to day running of the office has been maintained. With the dynamism of the Board there's certainly been a lot more correspondence to deal with and more mailouts to clubs.

My thanks to all who contribute to the running of the organization, but especially Board members who have been unstinting in their time and advice.

Jenny Sykes  
Administration Officer

---

## **COMMUNICATIONS**

### **Communications Strategy**

For the first time this year BWV has developed a communication strategy. The communication strategy sets a planned and coordinated approach that will help BWV deliver a better understanding of what the organisation does and why, help build and enhance the reputation of bushwalkers and assist with increasing member participation and collaboration.

The strategy is directly linked to the BWV strategic objectives of promoting bushwalking, adding value to the community, representing the interests of bushwalkers and improving governance.

The strategy includes a range of established ideas such as the BWV web site, Bushwalking News Victoria and the publication of information for walkers. New ideas in the strategy include more extensive use of online technology such as online groups, wiki's or blogs to better engage and involve existing members and using engaging with the media to promote and celebrate the achievements of BWV, member clubs, members and bushwalkers generally.

The next step will be the establishment of a Communications Committee to oversee the development and implementation of the strategy. The committee will be chaired by a board member and will include the Bushwalking News Victoria editor and others with communication and web skills.

### **Web Site**

Following the launch of the Bushwalking Victoria web site in 2007 a post implementation review was conducted which identified a range of minor improvements that have been implemented. The most significant change to the site content has been the addition of a separate section to publicise the 75<sup>th</sup> Anniversary celebrations.

Two Board members have now been trained to publish minor content changes. This means that updates can now be published in a more efficient and timely manner.

Chris Towers  
Board Member

# TREASURER'S REPORT

## Comments on 2007/08 Annual Accounts

### SPECIFIC POINTS

- The financial report has been prepared for use by the members of Bushwalking Victoria and is a special purpose financial report. It has been prepared in order to satisfy the financial reporting requirements of the Associations Incorporations Act 1981. The Board has determined that the Bushwalking Victoria is not a reporting entity. The report is prepared on an accruals basis and is based on historical costs.
- Bushwalking Victoria has a surplus of \$16,598 at the time of the audit.
- The \$15,000 received annually from the Department of Victorian Communities is to be spent on projects that help improve the business performance of our organisation. We include in this expenditure the first aid subsidy (used to further skills), costs associated with developing management plans, some of our Administrative Officer's time and related expenses and many other expenses.
- In November 2000 recommended reserves were set at \$33,000. On 6th May 2008 the Board approved this amount to remain in the Contingency Fund as the reserve.

### NOTES TO THE ACCOUNTS AS AT MARCH 31, 2008

- Interest of \$9,120 received has been apportioned between the General Fund, Insurance Fund and the Search and Rescue Fund
- This money was received as a grant from the Department of Victorian Communities.
- This is entirely made up of reimbursements for first aid training.
- The depreciation of equipment has been calculated on a straight line at rates to match the cost of each item of equipment over its economic life. I have only included items that had a book value at the start of the year.

### Equipment List

	Cost \$	Book Value 2008 \$
<b>Search and Rescue Equipment</b>		
Snow Shoes, purchased 5/2006	1,425	444
Radios, purchased 6/6/07	1,970	1560
Carry bags	705	558
<b>Office equipment</b>		
Computer monitor, purchased 12/2005	349	289
Furniture ( purchased Mar 07)	2080	2,080
MYOB, purchased 1/5/07	595	397
Computer 6/1/08	1525	1017

- The difference in salary costs is mostly due to the addition of staff linked to the Go Further Project.
- Sundry Creditors:
  - Australian Taxation Department \$2,080
  - Health Super \$527
  - Vic Super \$949
- Provision:
  - Provision for Leave \$19,208
- Members Funds
  - 2008 \$
  - Retained surplus at beginning of year 125,592
  - Plus Net Surplus/(loss) attributable to members of Bushwalking Victoria 16,598
  - Retained surplus at the end of the financial year 142,190

### DISCUSSION

During the 2007/2008 year the accounts were streamlined to one single account with Bendigo Bank. The interest rate remains competitive.

Carole Petchell  
Treasurer

### Bushwalking Victoria Inc A0002548Y

### Statement by Members of the Board of Management

The Board has determined that Bushwalking Victoria Inc is not a reporting entity and that this special purpose financial report should be prepared in accordance with the accounting policies outlined in "Notes to the financial statements".

Bushwalking Victoria Inc does not have any mortgages, charges or securities; and is not a trustee of any trust nor does it have any trusts held on its behalf.

In the opinion of the Board the financial report as set out in this document:

- Presents a true and fair view of the financial position of Bushwalking Victoria Inc as at 31 March 2008 and its performance for the year ended on that date.
- At the date of this statement, there are reasonable grounds to believe that Bushwalking Victoria Inc will be able to pay its debts as and when they fall due.

This statement is made in accordance with a resolution of the Board and is signed on behalf of the Board by:

Date 22/5/2008 Signed, David Reid  
President

Signed, Carole Petchell  
Treasurer

## INCOME AND EXPENDITURE ACCOUNTS FOR THE YEAR ENDED 31 MARCH 2008

	Notes	2007 \$	2008 \$
<b>GENERAL FUND</b>			
<b>Income</b>			
Membership fees		47,222	46,842
Interest	1	3,273	2,206
Donations and grants	2	17,000	47,633
Newsletter subscriptions		390	345
Advertising		510	675
Federation Day & weekend		1598	1,726
Sundry income		<u>875</u>	<u>0</u>
<b>Expenditure</b>			
Training	3	3,000	2,320
Newsletter		2,623	3,052
General administration		20,717	23,727
Promotions		2,178	28
Affiliations		0	395
Bushwalking Australia		3,314	0
Bushwalking Environment Group		5,453	4,978
Depreciation		30	1,515
Salary and on costs	5	<u>24,738</u>	<u>53,984</u>
Surplus/(deficit) for the year		<u>8,814</u>	<u>9,428</u>
Add opening balance April 1, 2007		68,637	77,450
Closing balance March 31, 2008		<u>77,450</u>	<u>86,878</u>
<b>SEARCH AND RESCUE FUND</b>			
<b>Income</b>			
Interest	1	3,273	2,059
Donations, grants and equipment sales		<u>412</u>	<u>747</u>
<b>Expenditure</b>			
General administration (including travel)		2,001	2,711
Depreciation		<u>1,390</u>	<u>1109</u>
Surplus/(deficit) for the year		<u>294</u>	<u>(1014)</u>
Add opening balance April 1, 2007		14,380	14,674
Closing balance March 31, 2008		<u>14,674</u>	<u>13,660</u>
<b>INSURANCE FUND</b>			
<b>Income</b>			
Insurance contributions		58,230	61,435
Interest	1	<u>0</u>	<u>4,855</u>
<b>Expenditure</b>			
Insurance payments		54,942	58,105
Surplus/(deficit) for the year		<u>3,288</u>	<u>8,185</u>
Add opening balance April 1, 2007		30,178	466
Closing balance March 31, 2008		<u>466</u>	<u>8,651</u>

**BALANCE SHEET AS AT 31 MARCH, 2006**

	Notes	2007 \$	2008 \$
<b>CURRENT ASSETS</b>			
Bendigo Bank Cash Management Trading Account		135,951	157,201
<b>CURRENT LIABILITIES</b>			
Sundry creditors	6	1,222	3,556
Other liabilities	7	<u>14,720</u>	<u>19,208</u>
<b>NET CURRENT ASSETS</b>		<u>125,592</u>	<u>134,437</u>
<b>NON CURRENT ASSETS</b>			
Equipment		37,047	41,842
Less provision for depreciation		(31,465)	(34,089)
<b>TOTAL NET ASSETS</b>		<u>125,592</u>	<u>142,190</u>
<b>MEMBERS FUNDS</b>			
	8		
General Fund		15,000	15,000
Search and Rescue Fund		14,000	14,000
Contingency Fund		33,000	33,000
Future Projects Fund		63,592	80,190
		<u>125,592</u>	<u>142,190</u>

*The accompanying notes form an integral part of this report.*

**AUDITOR'S REPORT TO THE MEMBERS OF BUSHWALKING VICTORIA INC**

I have audited the financial report, being a special purpose financial report, of Bushwalking Victoria Inc for the year ended 31 March 2008 as set out in the above pages.

The financial report has been prepared for the purpose of fulfilling the requirements of the Associations Incorporations Act (Victoria).

In my opinion the financial report presents a true and fair view of the financial position of Bushwalking Victoria Inc as at March 31 2008 and the results of its operations and its cash flows for the year ended in accordance with the accounting policies described in the Notes to the financial statements.

Joanna OBrien, BBus (Accounting), TSTC  
15 May 2008  
Melbourne

# BUSHWALKERS SEARCH & RESCUE

A retirement and new initiative, new appointments, relocation, four searches and three practices kept Bushwalkers Search and Rescue (BSAR) members busy.

In May 2007, Neil Weatherill retired from BSAR after 18 years of service. Neil was Police Liaison Officer (PLO) and Minute Secretary for the duration of his involvement for which BSAR is very grateful. A presentation from BSAR and Police SAR was made on 27<sup>th</sup> July.

Also in May BSAR appointed two new PLOs and a new Field Organiser (FO). Chris Jarvis left his FO role to take up a PLO position. Also appointed as a PLO and making a return to BSAR was Neville Byrne. John Baillie was appointed to fill the FO vacancy. John, a regular contributor at meetings and training, was also appointed Assistant Equipment Officer earlier in the year.

The Police SAR Squad had regular representation at Committee meetings and the November meeting was held at the Squad's premises in Williamstown. Meeting attendance by a member of the Squad and their involvement in training contributes significantly to maintaining good working relationships between the organisations.

At the request of Police SAR, the Committee agreed try to provide small numbers of searchers rapidly (within 2-2½ hours of notification) to assist with initial reconnaissance searching.

An initial draft Rapid Response Policy was discussed in July and a Working Group set up to refine it and make a recommendation to the September meeting. The Gwinear search however provided an unexpected trial of the draft policy and raised numerous issues, not the least of which related to searcher safety and logistics. The policy was further clarified and approved in November. Since then, the King River search opened discussion on a "limited numbers" call-out and the Rapid Response Policy is being reviewed in light of this option.

Sixteen BSAR members responded to the search for a 19yo Scottish tourist, William Bliss, who became lost on 3<sup>rd</sup> April 2007 in the Sabine Falls area. More than 40 Police, SES, Parks and other volunteers searched on 4<sup>th</sup> April, but he was not found and BSAR was called out that evening. BSAR groups were tasked to search rough terrain along Smythe Creek. The lost tourist was found within 30 minutes of BSAR deployment, having walked out onto a road.

On 21<sup>st</sup> August 2007 Police SAR made a request, acknowledging it was outside established guidelines, for a small group of searchers at short notice to find 15yo Sam Fink at Mt St Gwinear. He became separated from his school group and despite teachers, Parks staff and local Police conducting an immediate search, wasn't found. The Police Dog Squad, SES and Red Cross also attended. Twelve BSAR members were deploying just after midnight when a Police search party found the boy. The Police had initiated a further full callout for later that day for up to 40 searchers with ski or snowshoe experience. This was cancelled at 0130 hrs, but 25 members had committed to attend.

A 33yo man disappeared near Whitfield in the King River on 7<sup>th</sup> December 2007 after his 4WD broke down on Wild Horse Gap road. Fourteen BSAR members joined the search on 9<sup>th</sup> December. Police SAR requested a limited number of searchers as all had to be transported to the search area by 4WD. The first BSAR group was en route to the search start point when the man was spotted from the helicopter. Fortunately he could be winched out

otherwise it would have been a very tough, two-day bush slog for the BSAR members to assist with the rescue.

A BSAR member from Birkebeiner Nordic Ski Club, being the only member available, was teamed up with three local Parks Victoria staff to assist in the search for a 54yo Penny Craig on the Bogong High Plains. She was attempting a multi-day, solo walk starting 11<sup>th</sup> February at Brandy Creek Track, Mt Hotham. It is believed she became disoriented near the top of Paling Spur and phoned for help. Police Air-Wing was unable to access the area due to weather conditions. She eventually made contact with a Bright SES group coming up Paling Spur.

Some 51 BSAR and Police personnel participated in the very successful Dryland Training Day at the Police Academy on 2<sup>nd</sup> June. This training specifically targeted new members and provided more advanced training for experienced members. There was very positive feedback on the sessions.

On 21<sup>st</sup> and 22<sup>nd</sup> July, 23 BSAR members, three from Police SAR and four members of Warrigal SES completed the Winter Weekend Practice at Mt St Gwinear. Conditions were cold, clear with no wind, but plenty of snow. The weekend gave new members insight into how an actual search evolves and how physically fit one has to be. The more experienced members had the challenge of looking after a "patient" overnight and an evacuation the next day.

The Steep Snow & Ice/Backcountry Ski Skills Practice was held at Mount Hotham on 15<sup>th</sup> and 16<sup>th</sup> September. Ten BSAR members and five Police SAR members attended. The practice included roped travel, load testing of anchors and an introduction to avalanche beacons. Bill Barker from Mt Hotham Ski Patrol briefed the group on recent rescues and spoke about avalanche hazard control and risk areas. Members then practiced hauling in a steep, gully system. On Sunday, groups were provided with ski instruction.

Only three BSAR members updated or upgraded their first aid qualifications during the year, despite availability of subsidies.

For around 30 years BSAR had the privilege of using the facilities at Police Transport Division in Dawson Street, Brunswick. This support included the provision of transport and drivers, secure parking during call-outs and, since around 1999, equipment storage facilities. The staff at Dawson Street are thanked for the many years of support. On 24<sup>th</sup> November BSAR moved to the Police Bands Complex in Green Street, Northcote. The new venue worked very well during its first use in early December for the King River search and staff at the new site have been most welcoming.

Sport and Recreation Victoria (SRV) continued to provide funds to Bushwalking Victoria for BSAR administration and training. The department's financial support is greatly appreciated.

*Behind the Log* (BTL) helps provide information to each member and to clubs. Ren Millsom capably produced and edited the two issues during the year. Distribution was a joint effort by Cheryl Walker, Rik Head and Jenny Sykes. Thanks to Ren, Cheryl, Rik and Jenny for their part in ensuring that BTL kept members informed. Rik Head ably managed and regularly updated the BSAR website. Cheryl Walker, from the VNPA Bushwalking and Activities Group, was appointed as Membership Secretary in September 2007. Cheryl has settled into the role very well. Thanks to Rik

Head who was Interim Membership Secretary from November 2006 and assisted Cheryl to get started.

Various members of the BSAR Committee took minutes until July 2007 when Cheryl Walker offered to also take on this responsibility. Thanks to all who undertook this task during the year.

The 2006 equipment review recommendations were revisited in light of the move to Northcote. BSAR Equipment Officer, Chris Jarvis, together with newly appointed Assistant Equipment Officer, John Baillie, assessed all BSAR equipment and storage requirements. The BSAR Committee approved further recommendations for equipment disposal, purchase and storage and implementation is well underway. The old snowshoes were well received by Birkebeiner Nordic Ski Club for display in its clubrooms. BSAR also received safety glasses and scrub gloves courtesy of the Police SAR Squad. New CB radios, complete with storage case, were purchased during the year to supplement Police communications. Thanks to Chris and John for all their hard work on the equipment front.

The 274 dedicated people [Note: this figure is a little lower than previous years due to a calculation error which did not impact on searcher numbers] involved in BSAR are what make it unique. Twenty-four clubs contributed 220 searchers and 61 club contacts to help maintain this specialised, volunteer community service and are to be congratulated. Estimated volunteer hours contributed to the running of BSAR totalled 3,180 for the year, significantly higher

than last year due to the number of searches, an additional training activity, equipment reviews and relocation, new policy development and significant administration activity. This highlights BSAR's substantial contribution to the Victorian community.

During the past ten years BSAR has witnessed fluctuations in searcher numbers. The last three years have been stable, but how will BSAR maintain its momentum in the future? With an aging membership profile, BSAR needs to recruit new, younger members. The individual membership option now available with Bushwalking Victoria will hopefully see a rise in numbers. BSAR also intends to lift its profile and has applied for a substantial grant from Emergency Management Australia to assist with recruitment and retention of members.

Many thanks to the BSAR team, especially the Committee, for providing wonderful support, not just during the past year, but also for the past decade. I would not have managed this long without their generously given time and contributions. I also take this opportunity to thank members of Police SAR and look forward to ongoing, close collaboration and mutual support.

As always, BSAR benefits from the efforts of many who enable the provision of this essential community service. I look forward to celebrating BSAR's 60<sup>th</sup> year commencing in August 2008.

**Monica Chapman**  
Convener

---

## INSURANCE

---

It has been a pretty un-eventful year with no issues such as temporary membership raising its head.

On average I get two to four queries a month from different clubs. The queries range from needing a certificate of currency to explanations on specific clauses in the contracts.

I do also arrange to have cover extended for special events such as the annual BAD Bike ride for the Ballarat Bushwalking & Outdoor Club.

### **Bushwalking Australia**

The relationship with Bushwalking Australia is an excellent one. Howard Tooth of BWA has proven to be a great resource of knowledge and a good contact with the insurance broker.

### **Public & Products (P&PL) Insurance**

This product continues to be underwritten by Liberty International Underwriters.

There have been no significant changes in the cover since last year.

The total annual cost of P&PL cover, including the insurer's premium, GST, stamp duty and the broker's fees for managing the policy worked out at \$5.25 per member, a decrease of 60 cents on the 05/06 year. 6,601 Victorian members are covered under the national policy.

### **Personal Accident (PA) Cover**

This policy continues to be underwritten by Accident & Health International Underwriting Pty Ltd.

There have been no significant changes in the cover since last year.

The total annual cost of PA cover, including the insurer's premium, GST, stamp duty and the broker's commission for managing claims worked out at \$5.30 per member, an increase of \$1.50 on the 06/07 year. 6,128 Victorian members are covered under the national policy.

### **Property Cover**

Our Business Pack insurance covering Bushwalking Victoria property at various locations was renewed at a similar cost to last year. This policy also covers property owned by interstate federations and clubs. Bushwalking Victoria's share of the premium was \$791.49

### **Associations Liability Cover**

Bushwalking Victoria investigated this form of cover during the year with the help of the BWA insurance officer. A product designed specifically for incorporated non profit organisations has been sourced and a policy is now in place to protect Board members, conveners, employees and other volunteers.

### **Claims 2007-08**

P&PL – No claims notified so far.

PA - 5 claims were lodged for Victorian clubs this year:

Fractured leg – Cost \$427.20 – Still open  
Fractured ankle – Cost \$1,067.54 – Still open  
Fractured ankle – Cost \$5,000.00 – Still open  
Fractured ankle – Cost \$500.00 – Still Open  
Brain haemorrhage - Cost \$0 – Still Open

Property – No claims notified so far.

**David Gordon**  
Insurance Convener

# LAND MANAGEMENT and BUSHWALKING ENVIRONMENT SUBMISSIONS

## Victorian Environmental Assessment Council (VEAC) River Red Gum Forests Investigation Community Reference Group (CRG)

Two meetings of the CRG were held in the reporting period, one on 19 July 2007 in Echuca and the other on 28 August 2007 in Shepparton, both of which Phil Brotchie attended as BWV representative.

The purpose of the first of these meetings was to provide copies of VEAC's Draft Proposals Paper and brief participants on its content. The second was devoted to updating CRG members on developments since release of the Draft Proposals Paper and to allow questioning of the socio-economic consultants who had contributed to the Paper.

The situation with the River Red Gums is that VEAC, in its Draft Proposals Paper, proposed the creation of a series of new National and Regional Parks and Natural Conservation Areas as well as environmental flooding of the Murray basin to the order of 4000 gigalitres at least every five years. The new parks have been very strongly opposed by logging, pastoral and hunting interests, while Premier Brumby has stated that he will not countenance the environmental flooding proposed by VEAC. He is also going ahead with the Yea-Melbourne pipeline, which holds the potential to even further deplete the supply of water flowing through the Murray-Goulburn system, an area where, already, thousands of River Red Gums are dead, moribund or severely stressed, with commensurate damage to their associated ecosystems. We and other conservation groups on the CRG (including VNPA, with which we regularly liaise) have openly supported VEAC's draft proposals, but we face determined opposition from the logging, pastoral and hunting groups on virtually all aspects of the VEAC recommendations, as well as impediments from the Victorian Premier on the flooding issue.

VEAC has to provide a final Proposals Paper to the Minister for Water, Environment and Climate by 1 May 2008. The Report must be released to the public by 8 May and tabled in Parliament within 7 parliamentary sitting days of 1 May. The response to the Report must be tabled in Parliament on the first sitting day after six months have expired since its tabling.

## Submissions

During the reporting period, BWV submitted a dozen substantial representations, drafted by Phil Brotchie, which commented on the following government environmental papers:



- Yarra Valley Parklands Draft Management Plan
- Chiltern-Mt Pilot National Park Draft Management Plan
- Environment and Natural Resources Inquiry into the Impact of Public Land Management Practices on Bushfires in Victoria
- DSE Consultation Paper entitled "Land and Biodiversity at a Time of Climate Change"
- Environmental Effects Statement regarding the East Gippsland Shire Council's Ocean Access Boat Ramp Proposal at Bastion Point, Mallacoota
- Draft Mildura District Fire Protection Plan
- Victoria's Nature-based Tourism Strategy Draft Plan 2007-2011
- VEAC River Red Gum Forests Investigation Draft Proposals Paper
- Draft Victorian Coastal Strategy
- Three Capes Track Tasman National Park Feasibility Study 2007
- Tasman National Park and Reserves Draft Management Plan 2008
- Draft Two Rivers [Yarra and Maribyrnong] Water and Land Access Plan.

## Articles prepared and published

### *Mossbed Rehabilitation*

At Steve Robertson's suggestion, Phil Brotchie wrote up the Mossbed Rehabilitation Weekend 24-25 March 2007 for the May 2007 issue of *VicWalk News*, where it appeared at pages 8-9.

### *Trail Bikes*

At the BWV President's suggestion, Phil Brotchie liaised with Roger Pitt, Coordinator of DSE's Trail Bike Project, with a view to Roger's preparing an article for VWN on the project so that BWV member clubs could learn what steps DSE was taking to overcome problems with trail bike riders. This Roger Pitt article (wrongly attributed to Phil Brotchie) duly appeared on pages 4-5 of the February 2008 VWN.

### *River Red Gums*

Phil Brotchie wrote a letter to the Editor, *Shepparton News*, in support of VEAC's draft proposals, and this was published on 9 August 2007.

## Meetings

In addition to the two VEAC River Red Gum Forests Investigation CRG meetings, Phil Brotchie also attended two meetings of Tourism Victoria's Industry Reference Group discussing Tourism Victoria's Nature-based Tourism Strategy.

## Related Correspondence

- With David Reid, Dave Rimmer and Steve Robertson about Bushwalking Environment matters
- With Jim Harker and others on Track Maintenance Group items
- With DSE about the condition of the Mt Torbreck walking track
- With Nick Roberts of VNPA about River Red Gum issues
- With John Brumby about RRG overbank flooding and the Yea-Melbourne pipeline
- With PV about our need to receive all draft management plans and similar papers released for public comment.

Dr Phil Brotchie,  
Coordinator Land Management Submissions

---

## TRACK DEVELOPMENT

---

The Track Development team has had a direct involvement (Exploration, survey & mapping) in the following tracks:

- Freemans Mill ( Bunyip State Park)
- Seven Acre Creek route (Upper Bunyip Area.)
- Messmate Fireline Track (Bunyip State Park)
- Stronachs Camp realignment ( AAWT Upper Thomson)
- Tidal River to Telegraph Saddle at Wilsons Prom

We have a continuing support and consultation role in the following proposed tracks:

- Ada Tree upgrade (Powelltown Area)
- Cobbobonee State Forest (Portland Area)

- Great Dividing Trail (Macedon)
- Otway Ranges Waterfall Walk
- Living Links Project

We also keep a watching brief on proposals for:

- The Grampians
- East Gippsland
- Central Highlands
- Gippsland Lakes

Dave Rimmer  
Coordinator Track Development



---

## TRACK MAINTENANCE

---

The Bushwalking Victoria Track Maintenance Group (TMG) has a number of aims:

- to allow members of different BV clubs to meet and work with one another
- to allow bushwalkers to put something back into the bush areas that we love
- to foster communication and co operation between bushwalkers and land managers
- to improve our walking experience.

We have done this by conducting a variety of activities in different parts of the state.

The Track Maintenance Group attended 8 events - Grampians (Boronia Peak), Otways, Beeches, Yarra Ranges NP, Condons Track, Stronachs Camp and Freemans Mill.

The Otways event involved providing extra attendance from Melbourne based clubs for the Geelong BWC's track clearing.

Many thanks to all who attended and , in particular, the leaders of the activities; Rod Novak, Jim Harker, Steve Robertson, Geoff Kelly and Graeme Kidd

Clubs can assist the TMG by advertising it's activities and by providing members and leaders to assist. Hopefully every club could advertise at least one TMG activity on it's program each year. TMG activities can provide work suited to all ages and levels of fitness. Any clubs conducting their own activities, and who want assistance, can contact the coordinator.

Jim Harker  
Coordinator Track Maintenance

---

## CONSERVATION PROJECTS

---

Conservation is an area still somewhat untouched by the majority of Clubs although some work that they do is not listed and therefore obviously unrecognised. As a separate area to actual track maintenance it is still vital in our role of preserving our bushwalking amenity.

Bushwalking Victoria have been involved for the last few years in several very successful Alpine Restoration Weekends formerly referred to as Mossed Rehabilitation. It has been due to an ongoing association with the Mt Beauty office and in the last year we held two successful weekends in both January and March with 30+ participants enjoying the several days away doing works which

ranged from rock removal, hawkweed survey and willow pulling. Working, socialising and interaction of various Club members was fantastic. A little disappointing was the hard earned grant from Envirofund that could not be used. But then again in many respects this was actually great as the Mossbeds were actually found to be recovering by themselves. This rehabilitation work, we envisage will continue in the many years to come by Bushwalking Victoria and the strength of our progress will only increase by further Club and member interaction and consultation.

Steve Robertson  
Coordinator Conservation Projects

## GO FURTHER PROJECT

In 2007 Bushwalking Victoria was funded \$40,000 by Sport and Recreation Victoria to implement the Go Further Project during the 2007/08 financial year. Go Further aimed to increase bushwalking participation in the community by developing and implementing a plan to engage with local community walking groups to provide support and expertise and to encourage them to 'go further'.

Bushwalking Victoria set up a project steering committee and appointed Gina Mancuso, Go Further Project Officer, in August 2007 to engage and consult with local community walking groups across Victoria and implement a series of pilot bushwalks with these groups.

Fifteen walking groups across Melbourne took part in consultations and pilot bushwalks aimed to inform Bushwalking Victoria about the issues and barriers preventing local community walking groups from taking up bushwalking and exploring and documenting what works and what could be sustainable. The following is a summary of pilot bushwalks and key findings from consultations and evaluations of pilot bushwalks in 2007 and early 2008:

- On Sunday December 2 2007, the Waverley Bushwalking Club in partnership with the Migrant Resource Centre (MRC) in the City of Monash implemented a 'Community Outreach Walk' in Sherbrooke Forest for newly arrived Burmese migrants. The Waverley Bushwalking Club worked closely with the MRC's Planning Officer to gain an understanding of any issues that may arise for this group of participants. For all 22 of the participants, this was their first experience of bushwalking.
- On Thursday 13 December 2007, Wingate Ave Community Centre's 'Thursday Morning Walking Group' participated in a pilot bushwalk in partnership with Go Further and a volunteer leader from Melbourne Bushwalkers Club. The Walking Group went on an extended walk along the Merri Creek Trail and later explored Ceres Environmental Park. The Walking Group deemed their 'green walk' a success and decided to include at least one bushwalk per term in their 2008 walking itinerary.
- On Tuesday 1 April 2008, four multicultural women's walking groups from suburbs in the City of Moonee Valley participated in a pilot bushwalk at Woodland Historical Park. The groups, including a Vietnamese walking group and Horn of Africa women's walking group, walked along the Spiritual Path at Woodlands and later enjoyed a picnic lunch. A total of 76 participants joined in on the pilot bushwalk.
- Data from consultations and evaluations of pilot bushwalks suggested that future sustained participation in bushwalking must take into account diversity of abilities, a stated need for information on 'how to' bushwalk, transport limitations, providing diverse walking opportunities that include 'easy' local walks to build people's confidence and the need for walks within school hours for parents with school children.
- There also appeared to be confusion about the definition of bushwalking. For some people, bushwalking meant travelling out of the city and into countryside. For others, a walk in the local park constituted a bushwalk.
- The most common perception about bushwalking is that it requires special knowledge and special equipment. Most people in the walking groups consulted felt that they are unable to go out and bushwalk because they didn't have any knowledge of where to go, what to do, how to do it and felt it requires specialised expensive



equipment and clothing.

- All the walking groups consulted were positive about the benefits of bushwalking. They listed a range of health benefits associated with walking and also talked about the specific benefits of both walking in a natural environment and walking socially. For many people the biggest benefit was being in a natural environment. Most participants were keen to get out and try walking in the bush.
  - For those culturally and linguistically diverse communities consulted, particularly those recently arrived in Australia, participants talked about being fearful of their new environment and limiting their physical activity outside their homes to a minimum. As a consequence, many were suffering from health problems including vitamin D deficiency, thyroid dysfunction and obesity and depression as a result of feelings of isolation.
  - The groups talked about the convenience of their local walking groups. They mentioned that it was easy to get to and didn't require much travelling. People said they would prefer to walk in the bush if it was close by and didn't require too much travelling to get to. They said they would like information about local 'green' walks and that they didn't know where to find out about local walks.
- Consistent with a trend by bushwalkers towards walking in urban environments due to aging demographics, the project has identified a need to redefine 'bushwalking' to include green walks, ie. walks in a more natural environment and not necessarily in remote locations.
- In all groups there was discussion about safety. People commented that if they were in the bush without an expert they would feel unsafe. They feared the heat, snakes and getting lost, in particular.

The project collaborated with a number of organisations and groups including Dousta Galla Community Centre, Moonee Valley City Council, Citylink Creek Connections, Council of the Aged, Moonee Valley Melbourne Primary Care Partnership, Kinect and Blind Sports Victoria. Walking Groups from the Cities of Darebin, Moreland, Moonee Valley, Whittlesea, Monash, Hepburn Shire, Brimbank and Stonnington were consulted.

The Go Further project has informed Bushwalking Victoria about both the needs of walking groups and practical experience about what works. As a result, Bushwalking Victoria have established a sound base for continuing to work with community organisations and seeking to develop relevant methods to continue the collaboration. In 2008, Bushwalking Victoria is working towards continuing community engagement activities and encouraging groups to start, run and sustain walking groups in the natural environment.

Darren McClelland  
Go Further Steering Committee Chair

---

## FEDERATION WALKS

---

### General

The efforts made by Alan Clarke to improve available information to the host clubs assisted in the successful delivery of the Healesville Federation Day and the capable planning currently underway for the future Weekend Event this year at Beaufort. The detailed manual produced in 2006 will shortly be reviewed to keep abreast of changes. In 2006 the organizers of the Bright event introduced the previewing of the walks booklet on the BWV website. At Healesville in 2007, the organizers introduced pre registration of walks along side pre registration of participants. This year we will see the introduction of an overnight pack walk

### 2007 Federation Walk

A 33 degree day saw 219 walkers from 29 clubs attending. This fell short of the 251 pre registered. No doubt the heat was an influencing factor. The Diamond Valley and Koonung Bushwalking Clubs introduced some innovative catering changes which were appreciated by all. Catering by the local football club meant that the organizing committee could deliver a good quality afternoon tea and avoid the plethora of food handling and storage rules. Use of the footy clubrooms also allowed the use of the licensed bar which was heavily patronised at the end of the hot day.



On arrival the registration area was very quiet and calm. Pre registration of walks as well as participants meant that it was a quick two minutes to have your arrival acknowledged, receive the souvenir walks booklet and proceed to join the appropriate walk queue. The organizing clubs are congratulated on the choice of location, walks, facilities and a good quality event delivered.

### 2008 Federation Weekend

The Ballarat Bushwalking and Outdoor Club are currently working very hard for this year's week end event at Beaufort. A good range of day walks can be expected along with the introduction of an overnight pack carry.

### 2009 75th Anniversary Walk

As part of the 75<sup>th</sup> Anniversary celebrations, it is planned that this event will unite our clubs. It involves all clubs offering and leading at least one walk on the program. All clubs will be invited to assist, whereby working collaboratively and celebrating together. Planned for April next year, Bushwalking Victoria's 75<sup>th</sup> Anniversary year celebrations will culminate in 'our' Federation Day.

Sylvia McLean  
Federation Walks Consultant



---

## BUSHWALKING AUSTRALIA

---

BWA completed its fourth year of operation on 30<sup>th</sup> September 2007.

### Achievements

- The Insurance Convenor from NSW, Howard Tooth, capably renewed the national insurance scheme.
- In November 2007 NSW hosted the 2nd face-to-face meeting for presidents and delegates from all states. The 2007 AGM was also held over the same weekend. David Reid and I attended as Victorian representatives. The 2008 face to face meeting will be hosted by Queensland in November.

The key outcome from the 2007 meeting was the determination of a shortlist of issues for action in the next 12 months. These were:

- Insurance
- Policies and Guidelines
- Profile
- Website
- Risk Management
- Updating the rules of BWA.

At the 2007 AGM the Council changes were:

- Ian MacDonald from Western Australia is the President.
- Hecate Jay from Western Australia remains as Secretary
- Tom Cowlshaw from QLD is the Treasurer.

Since the meeting there has been discussion on the following topics:

- Risk management – the approach and the role of BWA, State Federations and individual clubs.
- Uniform Track descriptions
- A discussion paper on – "Towards a Walkable Australia" prepared by Bill Gehling from South Australia.
- BWA's policy development process.
- Concerns re the Three Capes Track in Tasmania.
- BWA's relationship with the Outdoor Council of Australia.
- BWA website

BWV through its president David Reid has been very active in these discussions.

Marianne Watt  
BWV delegate to Bushwalking Australia

---

# STRATEGY CONSULTANT

---

## Overview

The role of the Strategy Consultant in BWV was originally deliberately loosely defined. During 2007-8 the work done has resulted in three main focus areas emerging. Whilst these may evolve in the future, they are likely to remain the key areas of effort over the next 2 years.

These areas are:

- i. assisting BWV in increasing its visibility and influence in government – notably the Victorian Government
- ii. assisting BWV to become known as ‘thought leaders’ in areas of key interest to bushwalkers such as the role and value of recreational walking, the conception and design of walking facilities and the value of recreational walking to the community
- iii. assisting BWV in the formulation of long term objectives and the strategies needed to attain them, consistent with the overall objectives of BWV and the key performance areas as set out in the President’s report.

## Increasing Visibility and Influence in Government

During 2007, BWV has had a series of meetings with Parks Victoria (PV) at which we have begun to position ourselves to exert more influence in their thinking on the development of walking facilities, track and trail design, and evaluation of track proposals. Unfortunately, PV has very limited funds, so it is not easy to show tangible short-term outcomes. However, we have been pushing for implementation of the relevant parts of the Tracks and Trails Strategy, and anticipate that this will (eventually) occur.

The Strategy Consultant worked with BWV President and Vice President to prepare and present a proposal to Sports and Recreation Victoria (SRV) for them to fund a Walking Development Manager over 4 years, to advise and assist in the development of recreational walking facilities state wide. This is seen as a senior position and was costed accordingly. Whilst SRV did not provide funding for this position for 2008, they have responded by supporting the concepts presented, and asking for further information on how the position would be managed, accountabilities etc. The Strategy Consultant will continue to work with the President and Vice President and with our contacts at SRV, to further develop and resubmit this proposal during 2008.

The Living Links program is an important initiative by the Port Philip and Westernport Bay Catchment Management Authority (PPWCMA) involving 15 Local Government Areas (LGAs) in Melbourne’s South East. The program will run until 2030 and is focused on linking the recreational assets of the Dandenong Valley with tracks, trails and pathways, improving water quality and the environment generally, and improving community amenities. The Strategy Consultant has a position on the Steering Committee of Living Links and BWV is a foundation signatory of the program along with PV, Melbourne Water, a number of local councils and PPWCMA. As this program progresses, it will provide a important opportunities to influence the thinking of the LGAs involved in the design and construction of walking facilities. Living Links will consider the creation of an ‘icon’ walking trail from bay to mountains (Chelsea to Mt Dandenong) in the next stage of the program.

The Strategy Consultant has assisted the BWV President to develop our relationship with SRV. This is an ongoing activity that will

evolve over several years, but our objective is to be seen as the organisation to talk to about recreational walking, and to lead SRVs thinking about the importance of walking in the community.

It is becoming increasingly apparent that an important part of Victorian Government thinking on recreational walking is driven by health considerations. One of the challenges for 2008-9 will be to increase our contacts with the relevant health focussed organisations such as the Heart Foundation, and building on the excellent work done by our ‘Go Further’ initiatives. This may lead to further initiatives working with these organisations, in the future.

## Thought Leadership

The Strategy Consultant formed part of the group that developed the paper ‘Creating Trails that Walkers will want to Walk’ which was presented by the BWV President in February 2008. The key role was to research and document a systematic methodology for the creation of a walking trail, from initial outline concept to completion, evaluation and audit. As far as BWV is aware, no such methodology has been published in Australia before. The paper overall attracted considerable interest and comment, including from PV.

## Long Term Objectives and Strategies

One of BWV’s long term objectives is to form key relationships with Government and other organisations which are setting the agenda in recreational walking policy for the future. One such organisation is Kinect, who have formulated an outline high level ‘Walking Strategy’ for Victoria. The Strategy Consultant is BWV’s main contact with Kinect. We have discussed with Kinect our role in such a Walking Strategy, and the areas in which we can add value. As a result of these discussions, Kinect has indicated that it would look to BWV to play an important role in the development of those parts of the Walking Strategy that focus on recreational walking. Kinect has good contacts at a high level in the Victorian Government, and we believe that Governmental action on integrated planning for walking facilities in Victoria will likely occur via Kinect or with Kinect involvement.

Tony Walker  
Strategy Consultant

### **Bushwalking Victoria is a member of:**

Bushwalking Australia  
Australian Conservation Foundation  
Australian Ski Patrol Association  
Outdoor Recreation Centre  
Victorian National Parks Association  
VicSport

# GOVERNANCE & MANAGEMENT

Bushwalking Victoria is an Incorporated Association and the peak body representing bushwalkers in Victoria.

There are 3 categories of membership.

- **Affiliated members** - 68 clubs, where the main activity is bushwalking. These clubs have full voting rights and their members are eligible to hold office.
- **Associate members** - 10 organisations or clubs whose activities include bushwalking but they are constituted primarily for other purposes. Associate members do not have voting rights but their members are able to participate in many Bushwalking Victoria committees and activities.

- **Individual supporter members** - may also participate in committees and activities.

The organisation is governed by a Board of Management comprising

- Five elected Officers
- Five general Board Members

The Board currently meets up to 11 times each year to review activities, make policy decisions and develop strategic direction.

The day to day management of the organisation is carried out by the office bearers, conveners of standing committees and other specialist officers.

## Board of Management - Office Bearers

President	David Reid	Waverley Bushwalking Club
Vice President	Barbara Guerin	Locksley Bushwalking Club
Secretary	Jan Clark	Boroondara Bushwalking Club
Treasurer	Carole Petchell	Bushrangers Womens Walking Club

## Board of Management - General Board Members

Sylvia McLean	Essendon Bushwalking Club
Catherine Guli	Waverley Bushwalking Club
Monica Chapman	Maroondah Bushwalking Club
Chris Towers	CAEX Bushwalking Club
Dave Rimmer	Victorian Mountain Tramping Club

## Staff

Administration Officer	Jenny Sykes
Go Further project officer	Gina Mancuso

## Other

Honorary Auditor	Jo OBrien	VNPA Bushwalking Activities Group
Public Officer	Jan Clark	Boroondara Bushwalking Club

## Standing Committee Chairpersons and Working Group Coordinators

Bushwalkers Search & Rescue	Monica Chapman	Maroondah Bushwalking Club
Bushwalking Environment Committee	Steve Robertson part year	Currently vacant
Track Development	Dave Rimmer	Victorian Mountain Tramping Club
Track Maintenance	Jim Harker	Victorian Mountain Tramping Club
Conservation Projects	Steve Robertson	Maroondah Bushwalking Club
Field Officer coordinator	Vacant	
Insurance	David Gordon	Border Bushwalking Club
Publications/Editor	Eileen Kerlin/Joslin Guest	Waverley Bushwalking Club/Boroondara Bushwalking Club
Finance Committee	Carole Petchell	Bushrangers Womens Walking Club
Communications Committee	Chris Towers	CAEX Bushwalking Club
Go Further Steering Committee	Darren McClelland	Essendon Bushwalking Club

## Consultants

Strategy	Tony Walker	Waverley Bushwalking Club
Land Management Submissions	Phil Brotchie	Walking Club of Victoria
Federation Walks	Sylvia McLean	Essendon Bushwalking Club
Accounting	Jo OBrien	VNPA Bushwalking Activities Group

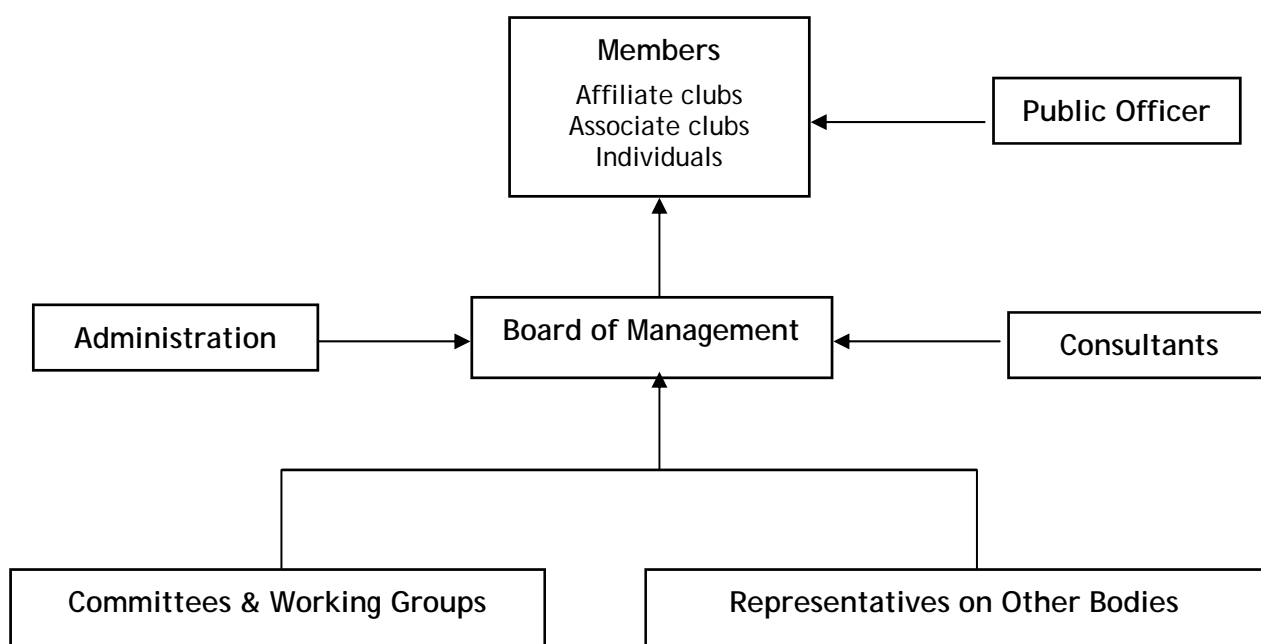
## Representatives on Other Bodies

Bushwalking Australia	Marianne Watt	Victorian Mountain Tramping Club
-----------------------	---------------	----------------------------------

## Organisations where BWV Members Provide a Bushwalking Perspective

Walking Trails Classification Project Control Board	David Reid	Waverley Bushwalking Club
River Red Gum reference group	Phil Brotchie	Walking Club of Victoria
Outdoor Recreation Centre Committee of Management	Kyle Matheson	VNPA Bushwalking Activities Group
Nature Based Tourism reference group	Steve Robertson	Maroondah Bushwalking Club
Mt Buffalo reference group	Pauline McLaughlin	Border Bushwalking Club
AAS Technical committee	Paul Chamings	Maroondah Bushwalking Club
Coast and Otways Tracks group	Bernard Jordan	Geelong Bushwalking Club
Living Links Steering committee	Tony Walker	Waverley Bushwalking Club

## BUSHWALKING VICTORIA INC ORGANISATION STRUCTURE



## MEMBERSHIP

### Affiliate Members

Bairnsdale Bushwalking Club Inc.  
Ballarat Bushwalking & Outdoor Club  
Basically Bushwalking Inc.  
Bass Coast Strollers Inc.  
Bayside Bushwalking Club Inc.  
Ben Cruachan Walking Club Inc.  
Benalla Bushwalking Club Inc.  
Bendigo Bushwalkers Inc.  
Bendigo Outdoor Club Inc.  
Berwick & District Bushwalking Club Inc.  
B'nai B'rith Ramblers  
Border Bushwalking Club Inc.  
Boroondara Bushwalkers Inc.  
Bunarong Bushwalking Club Inc.  
Bushrangers Womens Walking Club  
CAEX Bushwalking Club Inc.  
Camperdown Bushwalking Club  
Catholic Walking Club of Victoria Inc.  
Cobram Bushwalking Club Inc.  
Dandenong Valley Bushwalking Club Inc.  
Diamond Valley Bushwalking Club Inc.  
Echuca Moama Bushwalking Club  
Eltham and Environs Walking Group  
Essendon Bushwalking Club Inc.

Friends of the Great South West Walk Inc.  
Geelong Bushwalking Club Inc.  
Gisborne Bushwalking Club Inc.  
Grampians Bushwalking Club Inc.  
Great Alpine Walkers Club Inc.  
Great Dividing Trail Association Inc.  
Heathcote Walkers  
Keilor Bushwalking Club Inc.  
Koonung Bushwalking Club Inc.  
Locksley Bushwalking Club Inc.  
Maroondah Bushwalking Club Inc.  
Melbourne Bushwalkers Inc.  
Melbourne Walking Club Inc.  
Melbourne Womens Walking Club Inc.  
Melton Bushwalkers Inc.  
Orion Bushwalking Club Inc.  
Otway Ranges Walking Track Assoc. Inc.  
Pakenham Bushwalking Club Inc.  
Peninsula Bushwalking Club Inc.  
Peregrine Club Inc.  
Ramblers Walking Club Inc.  
Red Hill Ramblers Bushwalking Club Inc. [now disbanded]  
Rosebud Ramblers

Seymour Bushwalking Group Inc.  
Shepparton Adventure Club Inc.  
Solo Grads Bushwalking Club  
South Gippsland Walking & Adventure Club  
Springvale Bushwalking & Cycling Club Inc.  
Stonnington Walking Club  
Strzelecki Bushwalking Club Inc.  
Sunraysia Bushwalkers Inc.  
The Nomads Outdoors Group Inc.  
The Wednesday Walkers  
University of Melbourne Alumni Bushwalkers  
Victorian Mountain Tramping Club Inc.  
Walking Club of Victoria Inc.  
Wangaratta Out & About Inc.  
Warby Range Bushwalkers Inc.  
Warrnambool Walkers Inc.  
Waverley Bushwalking Club Inc.  
Wayward Women Walkers  
Werribee Bushwalking & Outdoor Club Inc.  
West Gippsland Bush Walkers Inc.  
Wimmera Bushwalking Club Inc.  
Wonthaggi Bush Beach Walking Club

### Associate Members

Birkebeiner Nordic Ski Club Inc  
Cowombat Walking Club  
Melbourne University Mountaineering Club  
Monash Bushwalking Club Inc.

Scout Bushwalkers  
VNPA Bushwalking Group  
Alpine Search & Rescue Victoria Inc  
Victorian Rogaining Association

Victorian Rovers (Scout Association)  
YHA Bushwalking Club